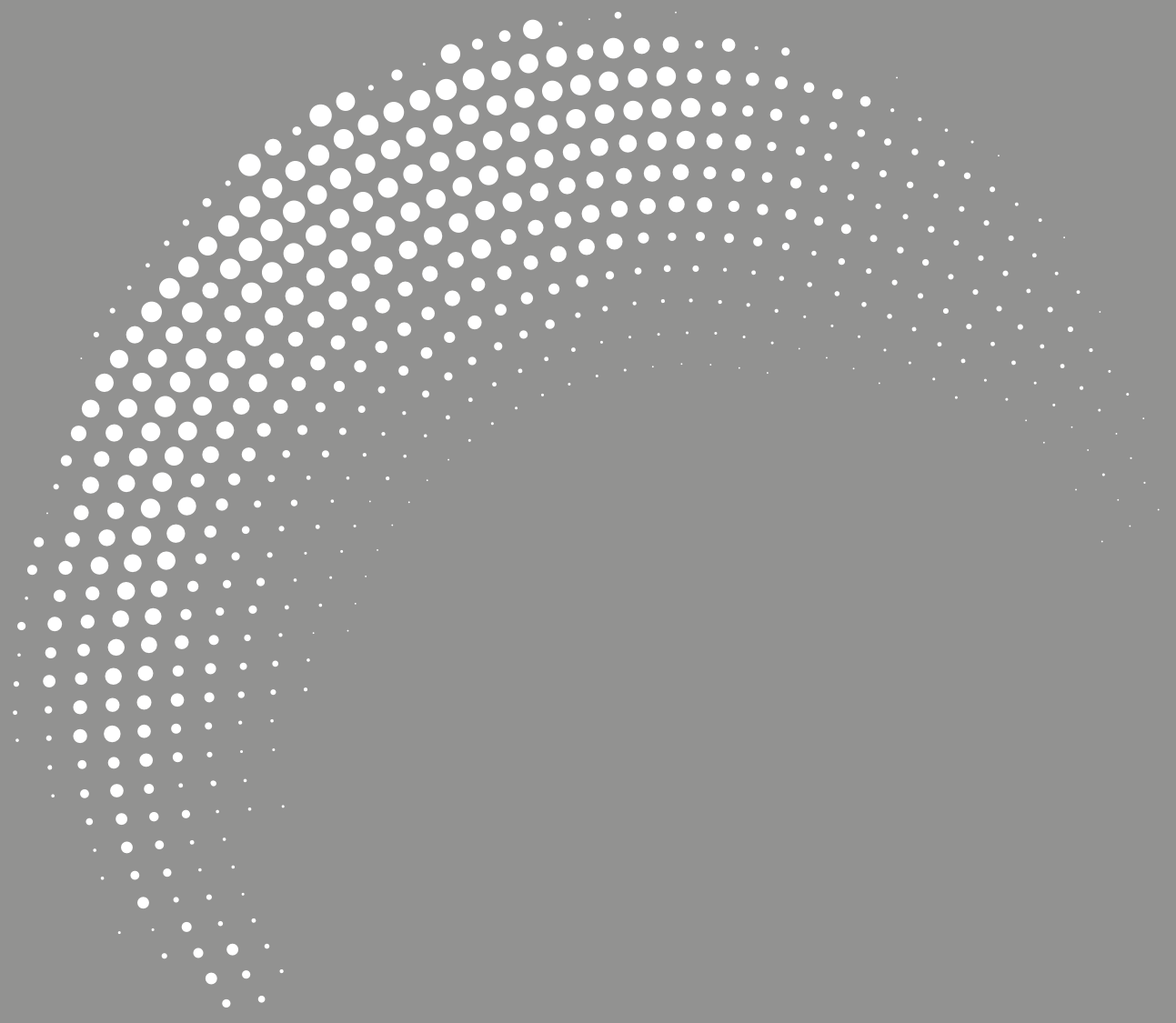


Air **14**
Equipment



Conversion Factors

Force

	KGF	N	LBF
KGF	1	9.8067	2.2046
N	0.102	1	0.2248
LBF	0.4536	4.4482	1

Weight

	G	KG	LB
G	1	0.001	0.0022
KG	1000	1	2.2046
LB	453.59	0.45359	1

Torque

	LBF-IN	LBF-FT	KGF-C	KGF-M	N-M
LBF-IN	1	0.083	1.152	0.0115	0.113
LBF-FT	12	1	13.83	0.138	1.356
KGF-CM	0.868	0.072	1	0.01	0.098
KGF-M	86.8	7.233	100	1	9.807
N-M	8.851	0.783	10.2	0.102	1

Length

	MM	CM	M	IN	FT
MM	1	0.1	0.001	0.0394	0.0033
CM	10	1	0.01	0.3937	0.0328
M	1000	100	1	39.371	3.2809
IN	25.4	2.54	0.0254	1	0.0833
FT	304.79	30.479	0.3048	12	1

Pressure

	KGF/CM ²	BAR	KPA	LB/IN ² (PSI)	ATM
KGF/CM ²	1	0.8907	98.0665	14.2231	0.9678
BAR	1.0197	1	100	14.5036	0.9869
KPA	0.0102	0.01	1	0.145	0.0097
LB/IN ² (PSI)	0.0703	0.069	6.895	1	0.0680
ATM	1.0332	1.0133	101.325	14.6957	1

Flow

	L/SEC	L/MIN	M ³ /H	M ³ /MIN	GA/MIN	FT ³ /H	FT ³ /MIN (CFM)
L/SEC	1	60	3.6	0.06	13.197	127.14	2.119
L/MIN	0.0167	1	0.06	0.001	0.23	2.119	0.0353
M ³ /H	0.2778	16.6667	1	0.0167	3.6658	35.3165	0.5886
M ³ /MIN	16.666	1000	60	1	219.95	2119	35.3165
GA/MIN	0.0758	4.5465	0.2728	0.0045	1	9.6342	0.1606
FT ³ /H	0.0079	0.4719	0.0283	0.0005	0.1038	1	0.0167
FT ³ /MIN (CFM)	0.4719	28.3152	1.6989	0.0283	6.2279	60	1

Contents

Compressors & Accessories	406-415
Spray Guns & Accessories	416-418
Heavy Duty Air Tools	
Impact Wrenches	420-427
Impact Ratchet Wrenches	428-429
Angle Impact Wrench	430
Die Grinders / Eraser	431-433
Micro Die Grinders	433
Angle Grinders	434-435
Cut-Off Tools	436
Cutters	437
Saws	438
Screwdrivers	439
Drills	440-441
Percussive Tools	442-443
Hydraulic Riveters / Adaptors	444-445
Sanders / Polishers	446-448
Belt Sanders	449
Auto Multiple Tool Kit	450
Auto Repair & Tapping Tool	451
Auto Repair Tools	452-453
Impact Socket Sets & Tools	454-457
Accessories – Miscellaneous	458
Torque Wrenches	458
Display Stands	459

BA106

Portable
1.5 HP / 6 L
Oil Free



- Cast iron cylinder block for longer durability
- Soundproof housing for reduced noise level
- Rubber shock absorbers for less vibration
- Large pressure gauge and regulator
- Roll bar to protect pressure switch assembly from damage

BA224

Portable
2 HP / 24 L
Lubricated



- Cast iron cylinder block for longer durability
- 2 x pressure gauges and regulator assembly
- Wide front leg c/w shock absorber for reduced vibration and good stability
- Ergonomic motor and cylinder cowl for extra protection and efficient cooling
- Carry handle – also protects pressure switch from damage
- Clearly visible oil sight glass

BA250

Portable
2 HP / 50 L
Lubricated



- Cast iron cylinder block for longer durability
- Large heavy duty wheels for all terrains
- 2 x pressure gauges and regulator assembly
- Twin front legs c/w shock absorbers for reduced vibration and good stability
- Ergonomic motor and cylinder cowl for extra protection and efficient cooling
- Carry handle – also protects pressure switch from damage
- Clearly visible oil sight glass

BA350

Portable
3 HP / 50 L
Lubricated



- Cast iron cylinder block for longer durability
- Large heavy duty wheels for all terrains
- 2 x pressure gauges and regulator assembly
- Twin front legs c/w shock absorbers for reduced vibration and good stability
- Ergonomic motor and cylinder cowl for extra protection and efficient cooling
- Long carry handle for easy manoeuvre
- Clearly visible oil sight glass and oil dipstick

Part No.	Horse-power HP	Tank Size L	Working Pressure Bar	Piston Displacement CFM	Voltage V	Lubricated	Dimensions L x W x H cm	Net Weight kg
BA106	1.5	6	8.0	5.65	230	Oil Free	36 x 30 x 48	11
BA224	2	24	10.0	7.77	230	Lubricated	61 x 31 x 58	25
BA250	2	50	10.0	7.77	230	Lubricated	77 x 43 x 66	33
BA350	3	50	10.0	10.95	230	Lubricated	94 x 32 x 70	37



Belt Driven
Portable



A powerful range of single phase compressors that can be run off 230 volt, 13 and 16amp electrical supply.

A professional range of compressors designed for craftsmen, medium sized workshops and contractors where mobility and stability are required.

- All pumps are fitted with a cast Iron cylinder for increased cooling
- Full sized pumps with large oil sump for increased lubrication and clear oil sight glass
- Special non-wear construction conrods and robust cast Iron crankshafts
- Efficient cooling thanks to the aluminium heads and large after cooling fins
- Large, multi-bladed flywheel for maximum cooling of the pump surrounded by heavy duty steel construction belt guard
- Heavy duty wheel kits with rubber gripped handle, two lockable jockey wheels for increased stability and easy manoeuvring
- Twin outlet pressure regulator fitted to all models with large pressure gauge
- Single phase electric motors fitted with thermal overload protection
- Automatic stop/start pressure switches fitted with soft start valves, prewired
- Machines fully CE certified and manufactured in accordance with EN ISO9001

Part No.	Receiver Size L	Motor HP / kW	Maximum Pressure Bar	Piston Displacement CFM	Free Air Delivery CFM	Dimensions L x W x H cm	Net Weight kg	Phase
BA2/100BP	100	2.0 / 1.5	10	9.1	6.3	101 x 41 x 90	56	1*
BA3/50BP	50	3.0 / 2.2	10	13.9	10.1	94 x 41 x 80	58	1**
BA3/100BP	100	3.0 / 2.2	10	13.9	10.1	100 x 41 x 90	71	1**
BA3/150BP	150	3.0 / 2.2	10	13.9	10.1	138 x 42 x 95	87	1**

*13 amp supply required / **16 amp supply required

Belt Driven Static



A powerful range of single and three phase compressors designed with larger volumes of air and higher working pressures to meet the demands of professional and industrial applications. Ideal for larger size workshops, or where higher demands of air and heavier duty applications are required.

- All pumps are fitted with a cast Iron cylinder for increased cooling
- Full sized pumps with large oil sump for increased lubrication and clear oil sight glass
- Special non-wear construction conrods and robust cast Iron crankshafts
- Efficient cooling thanks to the aluminium heads and large after cooling fins
- Precision piston rings fitted to lightweight pistons provide optimum performance
- Two stage pumps fitted with additional aftercoolers for increased cooling between compression stages
- Special design valve plates with higher load resistance
- Cast-Iron high-pressure pistons fitted to NS39 and NS59S pumps which reduces the wear of the conrods and further increase the lifetime of the compressor
- Large, multi-bladed flywheel for maximum cooling of the pump surrounded by heavy duty steel construction belt guard
- Single and three phase electric motors fitted with thermal overload protection.
- Automatic stop/start pressure switches fitted with soft start valves, prewired
- Unload solenoid valve on all models with star delta starter
- Machines fully CE certified and manufactured in accordance with EN ISO9001

Part No.	Receiver Size	Motor	Maximum Pressure	Piston Displacement	Free Air Delivery	Dimensions	Net Weight	Phase
	L	HP / kW	Bar	CFM	CFM	L x W x H cm	kg	
BA3/150BS1	150	3.0 / 2.2	10	13.9	10.1	138 x 42 x 95	87	1*
BA3/150BS3	50	3.0 / 2.2	10	13.9	10.1	138 x 42 x 95	87	3
BA3/200BS1	200	3.0 / 2.2	10	13.9	10.1	150 x 45 x 96	131	1*
BA3/200BS3	200	3.0 / 2.2	10	13.9	10.1	150 x 45 x 96	131	3
BA4/270BS1	270	4.0 / 3.0	10	17.1	11.9	153 x 60 x 116	140	1**
BA55/270BS3	270	5.5 / 4.0	11	23.1	17.8	152 x 59 x 126	180	3
BA75/270BS3	270	7.5 / 5.5	11	29.2	23.2	152 x 59 x 126	210	3
BA10/270BS3*	270	10.0 / 7.5	11	42.7	34.1	152 x 59 x 126	220	3

*16 amp supply required / **32 amp supply required



Belt Driven
Silent



The Balma FELP SILENT has been crafted specifically with professional and industrial users in mind where low noise levels are required. The newly designed canopy comes in various configurations based on your air needs and features a robust thick metal canopy and sound-proofing foam.

- All pumps are fitted with a cast Iron cylinder for increased cooling
- Full sized pumps with large oil sump for increased lubrication and clear oil sight glass
- Special non-wear construction conrods and robust cast Iron crankshafts
- Efficient cooling thanks to the aluminium heads and large after cooling fins
- Precision piston rings fitted to lightweight pistons provide optimum performance
- Two stage pumps fitted with additional aftercooler for increased cooling between compression stages
- Simple belt tensioning thanks to the easy belt slider construction
- Low noise levels due to the noise insulating foam on all canopy sides
- Lower outlet temperature provided by extended aftercooler pipe
- Integrated air damper to aid further reduction in noise levels
- Hinged cubicle for easy access to motor and serviceable components
- Three phase electric motors fitted with thermal overload protection
- Clear visible control panel with hours run counter, pressure gauge and light indicators
- Machines fully CE certified and manufactured in accordance with EN ISO9001

Part No.	Receiver Size L	Motor HP / kW	Maximum Pressure Bar	Piston Displacement CFM	Free Air Delivery CFM	Dimensions L x W x H cm	Noise Level db(A)	Net Weight kg	Phase
BALN55/270BS3	270	5.5 / 4.0	11	23	17.8	151 x 74 x 151	73	220	3
BALN75/270BS3	270	7.7 / 5.5	11	29.21	19.5	138 x 42 x 95	77	355	3

Belt Driven Petrol



Versatile engine driven air compressors for remote applications, from small building contractors, larger construction companies to farmers, the engine AIR range has everything you need. With these engine driven compressors you will be totally independent from any power sources.

- All pumps are fitted with a cast Iron cylinder for increased cooling
- Full sized pumps with large oil sump for increased lubrication and clear oil sight glass
- Special non-wear construction conrods and robust cast iron crankshafts
- Efficient cooling thanks to the aluminium heads and large after cooling fins
- Solid heavy-duty pneumatic wheels and ergonomic handle fitted for all terrains
- The latest GP & GX Honda Petrol engines fitted as standard
- Idling and speed regulators fitted as standard
- Double outlet pressure reducer and gauge fitted as standard, shockproof glycerine bath receiver gauge
- Large, multi-bladed flywheel for maximum cooling of the pump surrounded by heavy duty steel construction belt guard
- Machines fully CE certified and manufactured in accordance with EN ISO9001

Part No.	Receiver Size L	Motor HP / kW	Engine	Maximum Pressure Bar	Piston Displacement CFM	Free Air Delivery CFM	Dimensions L x W x H cm	Noise Level db(A)	Net Weight kg
BA48/100Petrol	100	4.8 / 3.6	GP160	10	14.5	9.5	111 x 52 x 94	76	76
BA9/270Petrol	270	8.4 / 6.3	GX270	10	19.5	14.7	154 x 63 x 116	77	183

Belt Driven Static/Vertical



Ideal for contractors and medium sized workshops where higher demands of air are required but space is at a premium.

- All pumps are fitted with a cast Iron cylinder for increased cooling
- Full sized pumps with large oil sump for increased lubrication and clear oil sight glass
- Special non-wear construction conrods and robust cast iron crankshafts
- Efficient cooling thanks to the aluminium heads and large after cooling fins
- Large, multi-bladed flywheel for maximum cooling of the pump surrounded by heavy duty steel construction belt guard
- Single phase electric motors fitted with thermal overload protection
- Automatic stop/start pressure switches fitted with soft start valves, prewired
- Machines fully CE certified and manufactured in accordance with EN ISO9001

Part No.	Receiver Size L	Motor HP / kW	Maximum Pressure Bar	Piston Displacement CFM	Free Air Delivery CFM	Dimensions L x W x H cm	Noise Level db(A)	Net Weight kg	Phase
BA3/150VBS1	150	3.0 / 2.2	10	13.9	10.1	85 x 97 x 195	73	160	1*

*16 amp supply required

Screw Micro Silent/Static



The BALMA Brio series of screw compressors, BALMA have created a market leading small screw compressor bringing the latest technology, increased market leading performance of 15%, whilst reducing your energy consumption by 12%.

- The Balma Brio range comes with an IE3 premium efficiency motor to give continuous operation as well as energy savings
- The Balma Brio features a newly designed air end that delivers 15% more air and is 12% more efficient than its predecessor. The screw air end allows for continuous operation without cool-down periods
- Sound attenuating canopy reduces sound emissions to comfortable levels, as low as 61 Db(A) making the Balma Brio range, perfect for point of use applications
- The Balma Brio range is fully suitable for low running hours supported by multiple options (optional extra), also suitable for operation at high ambient temperatures up to 46°C
- Latest refrigerant gas (R513A) offering -55%GWP, low pressure drops inside the dryer whilst the wet tank receiver reduces the load
- Long service intervals and external oil level check, quick access to air and oil filters, air oil separator, oil fill and drain make for easy maintenance
- Making the Balma Brio range a best in class offering, food grade oil, oil heater for intermittent use, 500 litre tank for increased productivity, line filter for improved quality air, and timer drain for automatic condensate removal, just to name a few
- Machines manufactured in accordance with EN ISO9001/ISO14001

Part No.	Model	Receiver Size L	Motor HP / kW	Maximum Pressure Bar	Piston (FAD) CFM	Noise Level db(A)	Dimensions L x W x H cm	Dryer	Net Weight kg	Phase
4152055228	BRI02.2 8 230/1/200	200	3.0 / 2.2	8	12.9	61	143 x 60 x 126	No	165	1*
4152055229	BRI02.2 10 230/1/200	200	3.0 / 2.2	10	10.4	61	143 x 60 x 126	No	165	1*
4152055230	BRI02.2E 8 230/1/200	200	3.0 / 2.2	8	12.9	61	143 x 60 x 126	Yes	190	1*
4152055231	BRI02.2E 10 230/1/200	200	3.0 / 2.2	10	10.4	61	143 x 60 x 126	Yes	190	1*



Screw Plus Silent/Static



The BRIO IE3 motor delivers a 100% duty cycle whilst reducing its carbon foot print of -55% GWP using the latest R513A refrigerant gas coupled with ultra low noise levels to make the BALMA range an excellent machine for point of use application. A full package offering best in class.

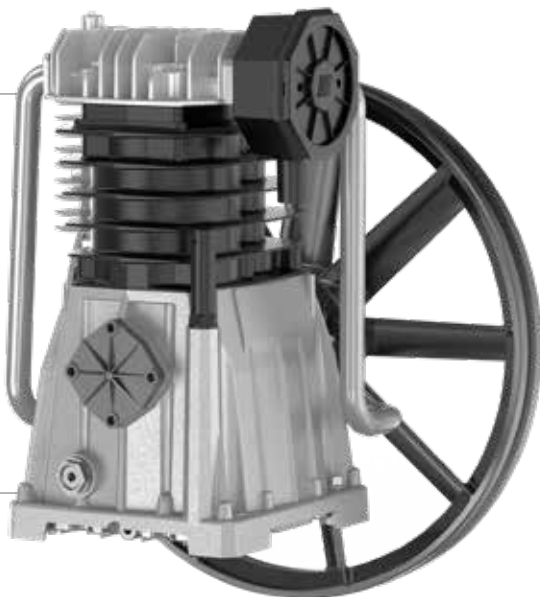
- The Balma Brio range comes with an IE3 premium efficiency motor to give continuous operation as well as energy savings
- The most advanced technologies in rotor design and oil housing, optimized seal arrangements and bearings offers reliability, efficiency and robustness
- Sound attenuating canopy reduces sound emissions to comfortable levels, as low as 61 Db(A) making the Balma Brio range perfect for point of use applications
- Latest refrigerant gas (R513A) offering -55%GWP, low pressure drops inside the dryer whilst the wet tank receiver reduces the load
- For continuous use, thanks to the 100% duty cycle motor, the Balma Brio compressor range is 30% more efficient than piston compressors and, due to less vibrations and fewer moving parts, have a longer lifetime
- The reliable Balma Brio range is fully suitable for low running hours supported by multiple options (optional extra), also suitable for operation at high ambient temperatures up to 46°C
- The efficient coaxial cooling fan provides excellent cooling of all internal components which leads to higher efficiency and better reliability in operation
- Long service intervals and external oil level check, quick access to air and oil filters, air oil separator, oil fill and drain make for easy maintenance
- The Infologic controller offers advanced monitoring of your equipment whilst being a simple day to day user configuration. Pressure and temperature readings, running and load hours, maintenance warnings, failure alarms, fast pressure settings are displayed directly on the controller
- Machines manufactured in accordance with EN ISO9001/ISO14001

Part No.	Model	Receiver Size L	Motor HP / kW	Maximum Pressure Bar	Piston (FAD) CFM	Noise Level db(A)	Dimensions L x W x H cm	Dryer	Net Weight kg	Phase
4152023422	BRIO 7.5X 8 400/270	270	10.0 / 7.5	8	40.3	65	154 x 72 x 134	No	250	3
4152023423	BRIO 7.5X 10 400/270	270	10.0 / 7.5	10	35.2	65	154 x 72 x 134	No	250	3
4152023427	BRIO 11E 8 400/270	270	15.0 / 11.0	8	57.2	69	154 x 72 x 134	Yes	265	3
4152023428	BRIO 11E 10 400/270	270	15.0 / 11.0	10	50.0	69	154 x 72 x 134	Yes	265	3

BALMA N-Series Replacement Pumps

The BALMA NS pump has been manufactured in Turin Italy since 1950. During the years the continuing research, development and processes has allowed BALMA to maintain a complete high quality range of heavy duty pumps with cast iron components to meet professional and industrial users needs.

All compressor components are made in-house using the latest machines to achieve efficiency and flexibility whilst retaining high quality and consistent standards – all matched by high level certified standards.



Accessories & Spare Parts

Service Kits

- 8973037657 NS12 / NS19S
- 8973037638 NS39
- 8973037640 NS59S

Air Filter

- 2236112735 NS12 / NS19S
- 8973037875 NS39
- 8973037873 NS59S

Compressor Pumps

- 4116090295 NS12
- 4116090298 NS19S
- 6218739900 NS39
- 6218740300 NS59S

Pressure Switches

Single Phase

- 55884878 Nema
- TMQ Telemecanique

Nema 3 Phase

- 55894380 4-6 Amp
- 55894398 6-10 Amp
- 55894406 10-16 Amp

Condor

- 93184430 2-4 Amp
- 93184448 4-6 Amp
- 93184455 6-10 Amp
- 93184463 10-16 Amp



Compressors Spare Parts – ARIA

NEWCO N-Series Replacement Pumps

Designed in 1982, the NEWCO pump has become an industry leader in a constantly evolving market, offering a quality pump which is recognised the world over. The Newco range is one of the most complete in its field, with the entire production taking place in Avellino, Italy. From here the manufacturing process begins with aluminium casting through to machining, assembly, testing and packaging – allowing the range to be completely supplied from individual parts to service kits.



Available in
2.8hp - 10hp

Accessories & Spare Parts

Service Kits

- 91894881 N2.8/NG2.8
- 91899062 N3/NG3
- 97155576 N4/NG4
- 55893622 N5/NG5
- 97159594 N6/NG6
- 55893622 NV10/NGV10

Pressure Switches

Single phase

- 55884878 Nema
- TMQ Telemecanique

Nema 3 phase

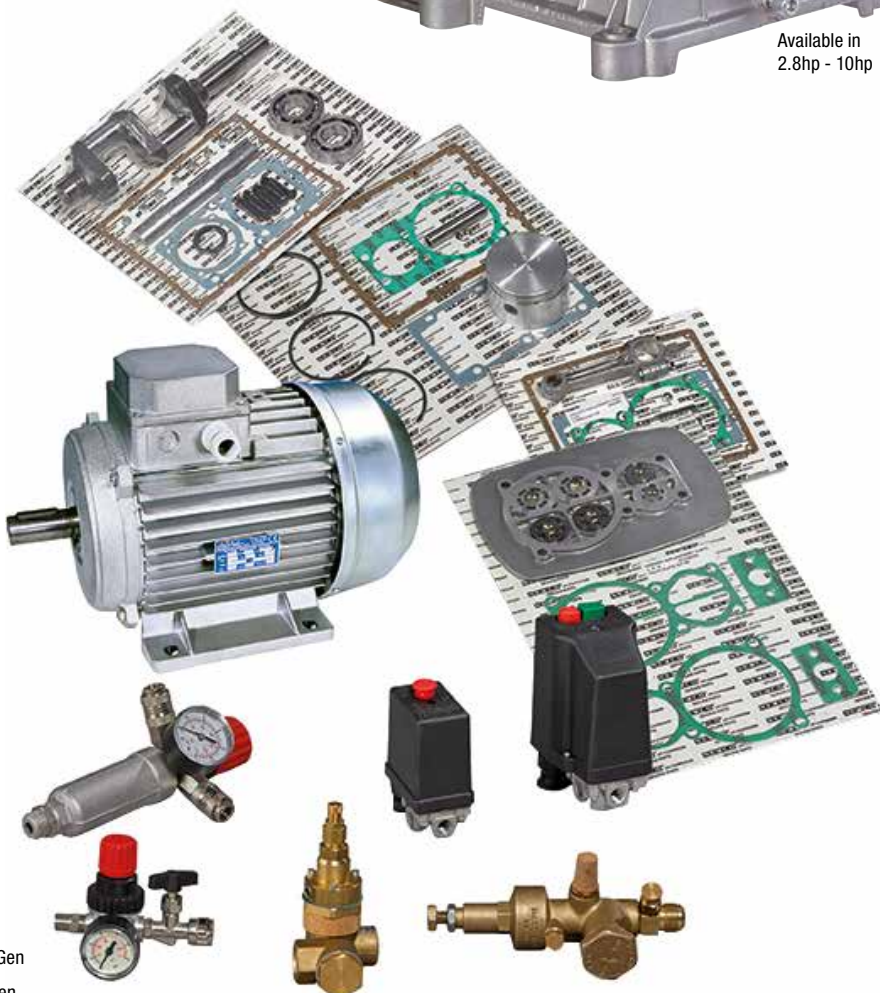
- 55894380 4-6 Amp
- 55894398 6-10 Amp
- 55894406 10-16 Amp

Condor

- 93184430 2-4 Amp
- 93184448 4-6 Amp
- 93184455 6-10 Amp
- 93184463 10-16 Amp

Air Filters

- 97021711 N2.8
- 97021745 N3/N4
- 55898928 N5 New Gen
- 97235899 N5 Old Gen
- 55898928 N6/NG6 New Gen
- 97018402 N6/NG6 Old Gen
- 55898928 NG10/NGV10 New Gen
- 97235899 NG10/NGV10 Old Gen



Air Tools &
Equipment

S-35G

Premium Gravity Fed

- High end automotive finishing
- World class atomisation for reduced costs
- The only no-need-to-replace nozzle (worldwide patent pending)
- Forged aluminium body, fine polished and anodised
- Performance, life and field tested
- Supplied with unique foldable S35 stand



S-35S

Premium Suction Fed

- High end automotive finishing and high quality woodworking
- World class atomisation to reduce paint loss and costs
- Forged aluminium body, fine polished and anodised
- Performance, life and field tested
- Comfortable spring loaded handle, ergonomically designed for user comfort



S-701

Suction Fed



- High quality fine atomisation
- Ideal for preparation of surface prior to final top coat, such as automotive vehicles, furniture, machinery and general metalwork
- Adjustable nozzles sets ensure constant high performance
- Air inlet 1/4"

S-701R

Suction Fed c/w Regulator



S-770P

Pressure Fed



- Choice of pressure or suction feed
- Ideal for preparation of surface prior to final top coat, such as automotive vehicles, furniture, machinery and general metalwork
- Adjustable nozzles sets ensure constant high performance
- Air inlet 1/4"

S-770S

Suction Fed



Part No.	Air Pressure PSI (Bar)	Air Consumption CFM	Cup Capacity ml	Nozzle mm	Feed Type
S-35G	50 (3.5)	16	600	14, 17	Gravity
S-35S	50 (3.5)	16	1000	17, 20	Suction
S-701	50 (3.5)	17	1000	1.8	Suction
S-701R	50 (3.5)	17	1000	1.8	Suction
S-770-12	50 (3.5)	12	1000	1.2	Suction
S-770S-15	50 (3.5)	12	1000	1.5	Suction
S-770S-20	50 (3.5)	12	1000	2.0	Suction

MINI6

Pro Touch-Up

- Designed and manufactured for the purpose of small area coating, repair or maintenance
- Improved atomising performance
- Ergonomic grip shape offers improved touch and feel
- 0.5mm fluid nozzle
- 50psi
- Side cup feed



H-827

HVLP Gravity Fed

- Nozzle sizes available 1.4, 1.7 (standard) and 2.0mm
- Durable brass air caps (not aluminium) for long life
- Stainless steel nozzle and needle
- Suitable for water-based paints
- Spray pattern can be adjusted to any object
- Anodised body to reduce need for cleaning
- Air inlet 1/4"



AB-17S

HVLP Suction Fed

- Nozzle sizes available 1.4, 1.7mm (standard)
- Durable brass air caps (not aluminium) for long life
- Stainless steel nozzle and needle
- Suitable for water-based paint
- Spray pattern can be adjusted to any object
- Air inlet 1/4"



AP2000

Spray Gun Set 15 pieces

Contains:

- HVLP 1.3mm Gravity Spray Gun – 600mm
- HVLP 0.8mm Gravity Touch-up Gun – 125mm
- Air Regulator
- Air Blow Gun
- Spare NNG Nozzle Kit
- Supplied in a blow moulded carry case



Part No.	Air Pressure PSI (Bar)	Air Consumption CFM	Cup Capacity ml	Nozzle mm	Feed Type
MINI6	50 (3.6)	?	125	0.5	Side Cup
H-827	43 (3)	15	600	1.7	Gravity
H-827-14	43 (3)	15	600	1.4	Gravity
H-827-20	43 (3)	15	600	2.0	Gravity
AB-17S	43 (3)	16	1000	1.7	Suction
AB-17S-14	43 (3)	16	1000	1.4	Suction

AK-1

Air Tools Kit

5 pieces

Contains:

- Spray Gun
- Washing Gun
- Inflating Gun
- Air Dust Gun
- Air Hose



AK-2

Same features as above but with a gravity fed spray gun

2-QT

Portable High Pressure Paint Pot

- 2 litre cc Paint Pot
- 4 metre Air and Paint Hose
- Carry Handle
- Pressure Gauge
- Regulator



NB: Gun is sold separately – see S-770P on page 416

PT10

Paint Tank

- 10 litre capacity



SK-13

Spray Gun Cleaning Kit

13 pieces



DB-01

Spray Gun Kit



MF-80

Water Trap



HD101

Spray Gun Stand



- Premium free standing gravity spray gun stand
- Solid metal construction
- Foldable for easy storage after use

Heavy Duty Air Tools

The air tools in this section have been categorised into three distinctive levels for user convenience (for reference only).



Easy to handle tasks quickly, these tools offer **efficiency and performance**.



These tools provide high torque **strength**, superior grinding power and superior cutting energy.



Built to last and low failure rate are characteristics associated with these **endurance** tools.

Application icons have been designed to provide visual references that suggest industry specific features or usability (for reference only).

 **Automotive**

 **Motorcycle**

 **Agriculture**

 **Boat**

 **Industry**



NC-3610Q

3/8" Drive Air Impact Wrench

Jumbo Hammer Type

Air inlet: 1/4"

- Durable Pin Clutch impact mechanism
- Low noise, stable and smooth torque output during operation
- Exceptional durability, easy to maintain
- Front exhaust
- Three setting air regulator on handle



NC-3210

3/8" Drive Air Impact Wrench

Twin Hammer Type

Air inlet: 1/4"

- Durable Twin Hammer impact mechanism
- Compact – ideal for confined working environment
- Low noise and lightweight – only 1.5 kg
- Strong and powerful – maximum torque 474 Nm



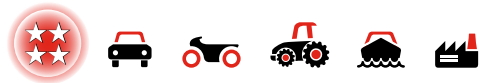
NC-3810

3/8" Drive Air Impact Wrench

Twin Dog Type

Air inlet: 1/4"

- Durable Twin Dog impact mechanism
- Butterfly type forward/reverse trigger
- Adjustable 3-speed regulator
- 180° air inlet
- Ideal for small engine maintenance assembly



NC-4630Q

1/2" Drive Air Impact Wrench

Jumbo Hammer Type

Air inlet: 1/4"

- Compact Jumbo Hammer – just 97mm long and 1.5 kg weight
- Powerful yet compact
- Reaches 610 Nm in just 5 seconds
- Low noise sound level of 85 dBA
- Suited to narrow work places and general heavy-duty maintenance



Part No.	Square Drive inch	Bolt Capacity inch (mm)	Torque Range ft-lb (Nm)	Max Torque ft-lb (Nm)	Free Speed RPM	Average Air Consumption CFM (l/min)	Air Pressure PSI (Bar)	Overall Length inch (mm)	Net Weight lbs (kg)	Air Hose inch	Sound Pressure dBA	Vibration Level m/s ²
NC-3610Q	3/8	1/2 (13)	100-300 (136-407)	350 (474)	8000	4.4 (124)	90 (6.3)	49/16 (115.5)	3.3 (1.50)	3/8	85.0	2.8
NC-3210	3/8	1/2 (13)	100-30 (136-407)	350 (474)	10000	4.0 (113)	90 (6.3)	55/8 (142)	3.3 (1.50)	3/8	92.1	3.6
NC-3810	3/8	3/8 (10)	5-50 (7-68)	75 (102)	11000	2.3 (65)	90 (6.3)	515/32 (139)	1.1 (0.50)	3/8	91.0	3.6
NC-4630Q	1/2	5/8 (16)	200-350 (271-475)	450 (610)	9000	4.4 (124)	90 (6.3)	327/32 (97)	3.3 (1.50)	3/8	85.0	2.8



NC-4650H

1/2" Drive Air Impact Wrench

Jumbo Hammer Type

Air inlet: 1/4"

- Ergonomic design
- Lightweight – 1.4kg
- Excellent max torque – 900 Nm (650 ft-lb)
- Mini type with overall length 104mm
- Ultra light and easy to use



E Z GREASE



NC-4130Q

1/2" Drive Air Impact Wrench

Pin Clutch Type

Air inlet: 3/8"

- Low vibration
- Clutch delivers smooth and comfortable operation
- Compact and ergonomic design with rubber grip
- Ultra light and easy use
- One-handed reverse button with 3 positive power settings
- Versatile tool ideal for all general repairs and maintenance



NC-4255QH

1/2" Drive Air Impact Wrench

Twin Hammer Type

Air inlet: 1/4"

- **Composite Material**
- Durable Twin Hammer impact mechanism
- Lightweight composite material body – just 2 kg
- Multi-function lever switch – controls both direction and speed precisely
- Integrated cylinder and rear end plate for stable output
- Ergonomic composite handle designed for operator comfort



E Z GREASE



NC-4238

1/2" Drive Air Impact Wrench

Twin Hammer Type

Air inlet: 1/4"

- Economical
- Durable



Part No.	Square Drive inch	Bolt Capacity inch (mm)	Torque Range ft-lb (Nm)	Max Torque ft-lb (Nm)	Free Speed RPM	Average Air Consumption CFM (l/min)	Air Pressure PSI (Bar)	Overall Length inch (mm)	Net Weight lbs (kg)	Air Hose inch	Sound Pressure dBA	Vibration Level m/s ²
NC-4650H	1/2	5/8 (16)	150-350 (203-475)	400 (542)	10000	4.2 (119)	90 (6.3)	5 ⁵ / ₈ (142)	3.5 (1.60)	3/8	90.6	2.8
NC-4130Q	1/2	1 ³ / ₈ (35)	180-400 (244-542)	400 (542)	8000	4.3 (121)	90 (6.3)	5 ⁵ / ₈ (142)	3.5 (1.60)	3/8	85.0	1.3
NC-4255QH	1/2	1 (25)	200-800 (271-1085)	1200 (1627)	8500	4.8 (136)	90 (6.3)	7 ¹ / ₃₂ (179)	3.7 (1.70)	3/8	85.0	4.7
NC-4238	1/2	5/8 (16)	150-300 (203-434)	400 (542)	7500	4.2 (119)	90 (6.3)	7 ¹ / ₄ (184)	6.1 (2.50)	3/8	93.2	4.4



NC-4299Q

1/2" Drive
Air Impact
Wrench

Twin Hammer Type

Air inlet: 1/4"

- Twin hammer structure provides greater and stable torque output also reduces vibration
- 360° swivel air inlet prevent s entanglement of the air hose
- Product with 3-stage forward rotation adjustment and 1-stage full power reverse



NC-4277Q

1/2" Drive
Air Impact
Wrench

Twin Hammer Type

Air inlet: 1/4"

- Aluminium body
- Light weight
- Maximum torque 1564 Nm



NC-6255Q

3/4" Drive
Air Impact
Wrench

Twin Hammer Type

Air inlet: 3/8"

- **Composite Material**
- Durable Twin Hammer impact mechanism increases durability and efficiency
- Powerful torque output –1627 Nm reduces trigger time
- Forward / Reverse and speed can be controlled simultaneously with multi-function switch
- Handle exhaust efficiently reduces noise and directs air away from the working area



Part No.	Square Drive inch	Bolt Capacity inch (mm)	Torque Range ft-lb (Nm)	Max Torque ft-lb (Nm)	Free Speed RPM	Average Air Consumption CFM (l/min)	Air Pressure PSI (Bar)	Overall Length inch (mm)	Net Weight lbs (kg)	Air Hose inch	Sound Pressure dBA	Vibration Level m/s ²
NC-4299Q	1/2	3/4 (19)	150-500 (204-680)	800 (1088)	8500	4.0 (113)	90 (6.3)	7 1/2 (194)	4.6 (2.10)	3/8	85.0	3.2
NC-4277Q	1/2	1 (25.4)	200-800 (272-1088)	1150 (1564)	8500	4.8 (136)	90 (6.3)	6.0 (155)	4.4 (2.00)	3/8	85.0	4.5
NC-6255Q	3/4	1 (25.4)	200-1100 (271-1491)	1400 (1890)	8500	4.8 (136)	90 (6.3)	7 13/16 (198)	4.2 (1.90)	3/8	85.0	4.7



NC-6256Q

3/4" Drive
Air Impact
Wrench

Twin Hammer Type

Air inlet: 1/4"

- Super Mini 3/4" drive air impact wrench
- 1200 ft-lb Torque
- The front housing and back head cover made by magnesium alloy



NC-6266

3/4" Drive
Air Impact
Wrench

Twin Hammer Type

Air inlet: 3/8"

- Twin Hammer impact mechanism for increased durability and efficiency
- Torque can be generated instantly
- Handle exhaust efficiently reduces noise and directs air away from the working area



NC-6216

3/4" Drive
Air Impact
Wrench

Twin Hammer Type

Air inlet: 3/8"

- **Composite Material**
- Twin Hammer impact mechanism
- 360° integrated air inlet swivel
- Powerful torque output – 1627 Nm reduces trigger time
- Forward / Reverse and speed can be controlled simultaneously with multi-function switch



NC-6236Q

3/4" Drive
Air Impact
Wrench

Twin Hammer Type

Air inlet: 1/4"

- Durable Twin Hammer impact mechanism
- 3/4" anvil with reduced compact body
- Ultimate power reaches 1627 Nm in under 5 seconds
- Does the toughest job efficiently with industrial level quality and durability



Part No.	Square Drive inch	Bolt Capacity inch (mm)	Torque Range ft-lb (Nm)	Max Torque ft-lb (Nm)	Free Speed RPM	Average Air Consumption CFM (l/min)	Air Pressure PSI (Bar)	Overall Length inch (mm)	Net Weight lbs (kg)	Air Hose inch	Sound Pressure dBA	Vibration Level m/s ²
NC-6256Q	3/4	7/8 (23)	150-900 (203-1220)	1200 (1627)	7000	5.1 (144)	90 (6.3)	5 ¹¹ / ₁₆ (145)	4.18 (1.9)	3/8	85.0	2.8
NC-6266	3/4	1 (25)	200-1300 (271-1760)	1500 (2034)	6000	6.0 (170)	90 (6.3)	8 ¹ / ₁₆ (205)	6.5 (2.95)	3/8	88.0	5.9
NC-6216	3/4	1 ¹ / ₁₆ (27)	200-1000 (271-1356)	1200 (1627)	6000	6.0 (170)	90 (6.3)	9 ¹ / ₄ (235)	9.0 (4.10)	1/2	91.2	5.0
NC-6236Q	3/4	1 (25)	200-900 (271-1220)	1200 (1627)	7500	5.5 (155)	90 (6.3)	6 ⁴ / ₆₄ (171)	5.9 (2.68)	3/8	87.0	4.5



NC-8237

1" Drive Air Impact Wrench

Twin Hammer Type

Air inlet: 3/8"



- **Composite Material**
- Durable Twin Hammer impact mechanism increases durability and efficiency
- 1" anvil with compact body
- 360° integrated air inlet swivel
- Powerful torque output – 1762 Nm reduces trigger time
- Forward / Reverse and speed can be controlled simultaneously with multi-function switch

NC-8266P

1" Drive Air Impact Wrench

Twin Hammer Type

Air inlet: 1/2"



- Light weight in 5.9 kg/13 lb
- 2300ft-lb /3118 Nm in 5 seconds reverse direction
- Durability composite material



- NC-8266P-6 fitted with 6" extended anvil

Part No.	Square Drive inch	Bolt Capacity inch (mm)	Torque Range ft-lb (Nm)	Max Torque ft-lb (Nm)	Free Speed RPM	Average Air Consumption CFM (l/min)	Air Pressure PSI (Bar)	Overall Length inch (mm)	Net Weight lbs (kg)	Air Hose inch	Sound Pressure dBA	Vibration Level m/s ²
NC-8237	1	1 3/8 (35)	200-1500 (271-2034)	1800 (2441)	4500	5.4 (153)	90 (6.3)	8 3/4 (222)	12.8 (5.7)	1/2	92.0	6.1
NC-8266P	1	1 3/8 (35)	200-2000 (271-2711)	2300 (3118)	4500	9.0 (255)	90 (6.3)	10 (256)	13 (5.9)	1/2	92.0	6.1



NC-8266S-6

1" Drive Air Impact Wrench

Twin Hammer Type

Air inlet: 1/2"



- Unique design
- Front housing formed with magnesium material
- Efficiency output spring blade
- One finger switch
- 2300FT-LB in 5 seconds



NC-8322 / NC-8342

1" Drive Air Impact Wrench

Pinless Type

Air inlet: 1/2"



- Durable Pinless Clutch impact mechanism
- Standard anvil (NC-8322) or 8" extended anvil (NC-8342)
- Reaches max torque within 3 seconds
- Multi setting air regulator for complete control
- Excellent for high volume work on HGV's, buses and heavy construction equipment



NC-8343-8

1" Drive Air Impact Wrench

Pinless Type

Air inlet: 1/2"



- Designed up exhaust
- Low vibration for a smooth operation
- Powerful and durable



NC-9223

1 1/2" Drive Air Impact Wrench

Twin Hammer Type

Air inlet: 1/2"



- Twin Hammer mechanism provides fast and instant balance torque output
- Break loose a frozen or rusted bolt easily
- Common applications include energy and gas maintenance and manufacturing

Part No.	Square Drive inch	Bolt Capacity inch (mm)	Torque Range ft-lb (Nm)	Max Torque ft-lb (Nm)	Free Speed RPM	Average Air Consumption CFM (l/min)	Air Pressure PSI (Bar)	Overall Length inch (mm)	Net Weight lbs (kg)	Air Hose inch	Sound Pressure dBA	Vibration Level m/s ²
NC-8266S-6	1	1 3/8 (35)	200-1800 (272-2448)	2300 (3118)	4500	7.5 (212)	90 (6.3)	22 3/4 (580)	15.84 (6.0)	1/2	92.0	6.1
NC-8322	1	1 7/16 (36)	200-2000 (271-2711)	2500 (3390)	3300	11.0 (311)	90 (6.3)	17 5/16 (440)	34.2 (15.5)	1/2	93.9	8.8
NC-8342	1	1 7/16 (36)	200-2000 (271-2711)	2500 (3390)	3300	11.0 (311)	90 (6.3)	24 3/8 (619)	38.0 (17.3)	1/2	93.9	8.8
NC-8343-8	1	1 3/8 (35)	200-1600 (271-2170)	1800 (2441)	3900	11.5 (325)	90 (6.3)	23 (590)	30.6 (13.9)	1/2	103	6.3
NC-9223	1 1/2	2 (50)	200-3000 (271-4065)	3500 (4746)	3000	16.0 (453)	90 (6.3)	17 3/4 (450)	42.2 (19.7)	3/4	104.5	8.8



NC-4650K

1/2" Drive Air Impact Wrench – 11 pieces

Air inlet: 1/4"

- 1 x NC4650 1/2" Air Impact Wrench
- 1 x MA411M13, 17, 19, 21, 22, 24 and 27 mm Sockets
- 1 x 5" Extension Bar
- 1 x Mini Lubricator SW-12
- 1 x 1/4" Plug



NC-6255QK

3/4" Drive Air Impact Wrench – 11 pieces

Air inlet: 1/4"

- 1 x NC6255Q 3/4" Air Impact Wrench
- 1 x MA611M24, 27, 30, 32, 33, 34 and 36 mm Sockets
- 1 x 7" Extension Bar
- 1 x Mini Lubricator SW-12
- 1 x 1/4" Plug



Part No.	Square Drive inch	Bolt Capacity inch (mm)	Torque Range ft-lb (Nm)	Max Torque ft-lb (Nm)	Free Speed RPM	Average Air Consumption CFM (l/min)	Air Pressure PSI (Bar)	Overall Length inch (mm)	Net Weight lbs (kg)	Air Hose inch	Sound Pressure dBA	Vibration Level m/s ²
NC-4650K	1/2	5/8 (16)	180-400 (244-542)	650 (900)	9000	4.7 (133)	90 (6.3)	41 ¹ / ₁₆ (104)	3.3 (1.4)	3/8	95.0	2.4
NC-6255Q	3/4	1 (25)	200-1100 (271-1491)	1400 (1890)	8500	4.8 (136)	90 (6.3)	71 ³ / ₁₆ (198)	4.2 (1.9)	3/8	85.0	4.7



NC-4255QK

1/2" Drive Air Impact Wrench –
11 pieces

Twin Hammer Type

Air inlet: 1/4"

- 1 x NC-4255Q 1/2" Air Impact Wrench
- 7 x Impact Sockets
MA411M13, 17, 19, 21, 22, 24 and 27
- 1 x 5" Extension Bar
- 1 x Mini Lubricator
- 1 x 1/4" Plug



NC-6236QK

3/4" Drive Air Impact Wrench –
11 pieces

Air inlet: 1/4"

- 1 x NC6236Q 3/4" Air Impact Wrench
- 1 x MA611M24, 27, 30, 32, 33, 34 and 36 mm Sockets
- 1 x 7" Extension Bar
- 1 x Mini Lubricator SW-12
- 1 x 1/4" Plug



Part No.	Square Drive inch	Bolt Capacity inch (mm)	Torque Range ft-lb (Nm)	Max Torque ft-lb (Nm)	Free Speed RPM	Average Air Consumption CFM (l/min)	Air Pressure PSI (Bar)	Overall Length inch (mm)	Net Weight lbs (kg)	Air Hose inch	Sound Pressure dBA	Vibration Level m/s ²
NC-4255QK	1/2	1 (25)	200-800 (271-1085)	1200 (1627)	8500	4.8 (136)	90 (6.3)	7 1/32 (179)	3.7 (1.70)	3/8	85.0	4.7
NC-6236QK	3/4	1 (25)	200-900 (271-1220)	1200 (1627)	7500	5.5 (155)	90 (6.3)	6 45/64 (171)	5.9 (2.68)	3/8	83.0	4.5



NE-261 / NE-361

1/4" Drive & 3/8" Drive Air Ratchet Wrench

Air inlet: 1/4"



- Back exhaust design to reduce flying dusts
- NE-361 with 3/8" square drive
- NE-362 with dual-use square drive
- 160mm long suitable for narrow space



NE-321 / NE-421

3/8" Drive & 1/2" Drive Air Ratchet Wrench

Air inlet: 1/4"



- NE-321 – 3/8" Drive / NE-421 – 1/2" Drive
- High speed revolution (RPM) allows for fast positioning
- Compact and lightweight – ideal for confined working environments
- Ultimate torque: 50 ft-lbs (68 Nm)



NE-251R / NE-351R

1/4" Drive & 3/8" Drive Stubby Air Ratchet Wrench

Air inlet: 1/4"



- NE-251R – 1/4" Drive / NE-351R – 3/8" Drive
- Ratchet head has easy to use Forward / Reverse valve
- Common applications include body shop repair, small engine and under-the-dashboard work



NE-462

1/2" Drive – Pin Clutch Type Air Ratchet Wrench

Air inlet: 1/4"



- Pin-clutch designed mechanism generates 100 Nm torque output
- Fasten-to-Stop design provides comfortable feel

Part No.	Square Drive inch	Torque Range ft-lb (Nm)	Max Torque ft-lb (Nm)	Free Speed RPM	Average Air Consumption CFM (l/min)	Air Pressure PSI (Bar)	Overall Length inch (mm)	Net Weight lbs (kg)	Air Hose inch	Sound Pressure dBA	Vibration Level m/s ²
NE-261	1/4	10-35 (13.5-47)	37 (50)	230	4.6 (130)	90 (6.3)	6 ⁵ / ₁₆ (160)	1.1 (0.5)	3/8	88.0	3.0
NE-361	3/8	10-35 (13.5-47)	37 (50)	230	4.6 (130)	90 (6.3)	6 ⁵ / ₁₆ (160)	1.1 (0.5)	3/8	88.0	3.0
NE-321	3/8	10-35 (13.5-47)	50 (68)	160	4.0 (113)	90 (6.3)	10 ³ / ₈ (265)	2.3 (1.04)	3/8	91.0	3.9
NE-421	1/2	10-35 (13.5-47)	50 (68)	160	4.0 (113)	90 (6.3)	10 ³ / ₈ (265)	2.3 (1.04)	3/8	92.9	4.6
NE-251R	1/4	5-15 (6.7-20)	22 (30)	350	3.0 (85)	90 (6.3)	5 (125)	1.1 (0.50)	3/8	89.0	4.4
NE-351R	3/8	5-15 (6.7-20)	22 (30)	350	3.0 (85)	90 (6.3)	5 (125)	1.1 (0.50)	3/8	89.0	4.4
NE-462	1/2	10-55 (13.5-74)	74 (100)	200	4.0 (113)	90 (6.3)	13 (330)	4.1 (1.88)	3/8	84.0	2.5



NE-0357

3/8" Drive Air Ratchet Wrench Kit – 57 pieces

Air inlet: 1/4"

- 1 x NE-352
- 7 x 1/4" Drive Sockets: 4,5,6,7,8,9,10 mm
- 6 x 3/8" Drive Sockets: 11,12,13,14,15,17 mm
- 40 x 1/4" Bits
- 1 x 3/8" Extension Bar
- 1 x 1/4" Hex Size Shank Driver
- 1 x Plug (Adaptor)

- High speed revolution (RPM) allows for fast positioning
- Compact and lightweight – ideal for confined working environments
- 57 piece kit in a convenient blow moulded case



NE-0413

1/2" Drive Thru-Hole Air Ratchet Wrench Kit – 13 pieces

Air inlet: 1/4"

- 1 x NE-461
- 8 x 3/4" Hex Thru-Hole Sockets: 8,9,10,12,13,14,17, 19 mm (NE-0413)
- 1 x 3" Extension Bar
- 2 x Adaptors – 3/8" & 1/2"
- 1 x Plug (Adaptor)

- Unique Thru-Hole design
- Ideal for threaded bar assemblies
- Convenient forward and reverse tab
- Composite grip
- 3-in-1 design – 3/8"-1/2" Thru-Hole



Part No.	Square Drive inch	Torque Range ft-lb (Nm)	Max Torque ft-lb (Nm)	Free Speed RPM	Average Air Consumption CFM (l/min)	Air Pressure PSI (Bar)	Overall Length inch (mm)	Net Weight lbs (kg)	Air Hose inch	Sound Pressure dBA	Vibration Level m/s ²
NE-352	3/8	5-15 (6.7-20)	22 (30)	350	3.0 (85)	90 (6.3)	5 (125)	1.1 (0.50)	3/8	89.0	4.4
NE-461	1/2	10-65 (13.5-88)	100 (135)	180	4.0 (113)	90 (6.3)	10 3/8 (270)	2.6 (1.20)	3/8	83.0	2.3



NC-498

1/2" Drive Air Angle Impact Wrench

Jumbo Hammer Type

Air inlet: 1/4"

- Compared with geared angle impact, the gearless angle impact reduces vibration and increases torque output
- Easy access in confined work spaces, short and stubby at 88 x 245 mm
- Low reaction force
- One handed Forward/Reverse operation – 3 positions in forward and 1 in reverse



Part No.	Square Drive inch	Bolt Capacity inch (mm)	Torque Range ft-lb (Nm)	Max Torque ft-lb (Nm)	Free Speed RPM	Average Air Consumption CFM (l/min)	Air Pressure PSI (Bar)	Overall Length inch (mm)	Net Weight lbs (kg)	Air Hose inch	Sound Pressure dBA	Vibration Level m/s ²
NC-498	1/2	5/8 (16)	80-300 (108-405)	400 (542)	6500	4.2 (119)	90 (6.3)	9 3/4 (247)	3.0 (1.37)	3/8	85.0	2.0



QA-111A Metric / QA-111B Imperial Air Die Grinder

Air inlet: 1/4"



- High speed
- Handy, ergonomic design provides excellent manoeuvrability
- Speed regulator allows precise speed control



QA-211A Metric / QA-211B Imperial Air Die Grinder

Air inlet: 1/4"



- High speed
- Handy, ergonomic design provides excellent manoeuvrability
- 0.9 hp high power motor efficiently handles the toughest jobs



QA-313A Metric / QA-313B Imperial Air Die Grinder

Air inlet: 1/4"



- Handy, ergonomic design provides excellent manoeuvrability
- Speed regulator allows precise speed control
- Equipped with 3" extended working shaft



QA-315A Metric / QA-315B Imperial Air Die Grinder

Air inlet: 1/4"



- Handy, ergonomic design provides excellent manoeuvrability
- Speed regulator allows precise speed control
- Equipped with 5" extended working shaft

Part No.	Collet Drive A mm	Collet Range B inch	Free Speed RPM	Average Air Consumption CFM (l/min)	Air Pressure PSI (Bar)	Overall Length inch (mm)	Motor HP	Net Weight lbs (kg)	Air Hose inch	Sound Pressure dBA	Vibration Level m/s ²
QA-111	6 & 3	1/4 & 1/8	25000	10.0 (283)	90 (6.3)	6 (155)	0.3	0.80 (0.38)	3/8	81.5	1.8
QA-211	6 & 3	1/4 & 1/8	20000	10.0 (283)	90 (6.3)	7 1/2 (190)	0.9	1.40 (0.65)	3/8	75.7	0.8
QA-313	6 & 3	1/4 & 1/8	25000	10.0 (283)	90 (6.3)	9 1/4 (235)	0.3	1.20 (0.58)	3/8	81.5	1.8
QA-315	6 & 3	1/4 & 1/8	25000	10.0 (283)	90 (6.3)	11 (280)	0.3	1.39 (0.63)	3/8	81.5	1.8



QA-141LA Metric Air Die Grinder

Air inlet: 1/4"



- Durable iron housing
- Front exhaust to clear work area
- High speed (24000 RPM)
- Ideal for the toughest working environments



QA-611A Metric / QA-611B Imperial 90° Air Die Grinder



- Handy, ergonomic design provides excellent manoeuvrability
- 90° working angle provides wide flexibility in confined areas
- High speed (19000 RPM)



QA-632QA Metric 97° Air Die Grinder

Air inlet: 1/4"



- 97° to improve operator comfort
- Inline air motor to improve durability
- High speed (22000 RPM)
- Composite grip
- Powerful 0.3 hp motor
- Low noise at only 75 dBA



QB-812 Air Eraser

Air inlet: 1/4"



- Spindle size: 3/8"-24
- Low speed (4000 RPM)
- Composite grip
- Lever lock safety trigger
- Rear exhaust
- Ideal for low speed polishing, sanding and surface preparation

Part No.	Collet Drive A mm	Collet Range B inch	Free Speed RPM	Average Air Consumption CFM (l/min)	Air Pressure PSI (Bar)	Overall Length inch (mm)	Motor HP	Net Weight lbs (kg)	Air Hose inch	Sound Pressure dBA	Vibration Level m/s ²
QA-141LA	6	-	24000	14.0 (396)	90 (6.3)	6 ¹¹ / ₁₆ (170)	0.4	1.30 (0.60)	3/8	75.0	2.5
QA-611	6 & 3	1/4 & 1/8	19000	10.0 (283)	90 (6.3)	6 ¹ / ₈ (160)	0.3	1.12 (0.51)	3/8	74.4	1.7
QA-632QA	6 & 3	-	22000	12.3 (350)	90 (6.3)	7 (177)	0.4	1.12 (0.51)	3/8	75.0	>2.5
QB-812	-	-	4000	10.0 (283)	90 (6.3)	8 ⁷ / ₈ (225)	0.5	1.70 (0.80)	3/8	75.0	0.87

Air Die Grinder kit / Micro Die Grinders



QA-0215A/B

1/4" Air Die Grinder Kit – 15 pieces

Air inlet: 1/4"

- 1 x Air Die Grinder (QA-211A/B)
- 2 x Collets (3mm - 6mm or 1/8" - 1/4")
- 2 x Spanner Wrenches
- 5 x Grinder Stones (3mm or 1/8")
- 5 x Grinder Stones (6mm or 1/4")



GRINDER STONE SETS

QB-9211 – 5 pieces **QB-9213** – 5 pieces



	Collet Drive A mm	Collet Range B inch	Free Speed RPM	Average Air Consumption CFM (l/min)	Air Pressure PSI (Bar)	Overall Length inch (mm)	Motor HP	Net Weight lbs (kg)	Air Hose inch	Sound Pressure dBA	Vibration Level m/s ²
QA-211	6 & 3	1/4 & 1/8	20000	10.0 (283)	90 (6.3)	7 1/2 (190)	0.9	1.40 (0.65)	3/8	75.7	0.8



QA-421

Micro Air Die Grinder

Air inlet: 1/4"



- Cushion handle grip provides non-slip surface
- Rust-free stainless steel front housing
- Ideal for machining dies, moulds or other restricted grinding applications

QA-441

Heavy Duty Micro Air Die Grinder

Air inlet: 1/4"



- Heavy duty 3mm pencil grinder
- Comfortable handle allows for smooth operation
- Rust-free stainless steel front housing
- Ideal for machining dies, moulds or other restricted grinding applications

QA-511

Micro Engraving Pen

Air inlet: 1/4"



- Comfortable handle allows for smooth operation
- Longer lifetime and lower vibration
- Rust-free stainless steel front housing

Part No.	Collet Size inch (mm)	Free Speed RPM	Blow Per Minute BPM	Average Air Consumption CFM (l/min)	Air Pressure PSI (Bar)	Overall Length inch (mm)	Hose Length mm	Net Weight lbs (kg)	Air Hose inch	Sound Pressure dBA	Vibration Level m/s ²
QA-421	1/8 (3)	60000	-	2.7 (76)	90 (6.3)	6 (150)	1500	0.49 (0.22)	3/8	70.0	0.5
QA-441	1/8 (3)	60000	-	2.0 (56)	90 (6.3)	5 5/16 (135)	1500	0.40 (0.21)	3/8	71.0	1.0
QA-511	-	-	13000	1.0 (29)	90 (6.3)	5 1/2 (140)	1420	0.50 (0.23)	3/8	78.0	0.6

Air Angle Grinders

Grinding discs not included – see Abrasive section



QB-144X (4") / QB-145X (5")

Air Angle Grinder

Roll Type Throttle

Air inlet: 1/4"



- Front exhaust
- Powerful 0.78 hp motor provides sufficient power for most grinding needs
- Strengthened alloy steel bevel gears dramatically improve performance and durability
- Comfortable ergonomic handle with non-slip grip



QB-7145 (4 1/2") / QB-7115 (5")

Air Angle Grinder

Lever Type Throttle

Air inlet: 1/4"



- 4 1/2" (115mm) or 5" (125mm)
- 1.3 hp motor for stall resistance
- One piece housing
- Heavy duty air cooled spiral gears and double bearings for durability
- 360° adjustable exhaust



QB-124 (4") / QB-125 (5")

Air Angle Grinder

Lever Type Throttle

Air inlet: 1/4"



- Powerful 0.8 hp motor provides sufficient power for most grinding requirements
- Composite material housing reduces the weight and improves comfort of operation



QB-117 (7")

Air Angle Grinder

Lever Type Throttle

Air inlet: 1/4"



- 7" (178mm)
- Powerful 1.0 hp motor provides plenty of power for rust and material removal
- Unique motor controller (governor) virtually eliminates over speed

Part No.	Pad Diameter inch (mm)	Spindle Size inch	Free Speed RPM	Average Air Consumption CFM (l/min)	Air Pressure PSI (Bar)	Overall Length inch (mm)	Motor HP	Net Weight lbs (kg)	Air Hose inch	Sound Pressure dBA	Vibration Level m/s ²
QB-144X	4 (100)	M10x1.5	11000	6.0 (170)	90 (6.3)	9 (228)	0.78	4.0 (1.81)	3/8	87.8	1.2
QB-145X	5 (125)	M14x2.0	11000	6.0 (170)	90 (6.3)	8 7/8 (226)	0.78	4.0 (1.81)	3/8	87.8	1.2
QB-7145	4 1/2 (115)	M14x2.0	11000	4.2 (119)	90 (6.3)	9 1/8 (232)	1.30	4.0 (1.81)	3/8	90.0	1.2
QB-7115	5 (125)	M14x2.0	11000	4.2 (119)	90 (6.3)	9 1/8 (232)	1.30	4.0 (1.81)	3/8	90.0	1.2
QB-124	4 (100)	3/8-24	11000	6.0 (170)	90 (6.3)	9 (230)	0.80	3.8 (1.73)	3/8	85.7	1.2
QB-125	5 (125)	5/8-11	11000	6.0 (170)	90 (6.3)	9 (230)	0.80	3.9 (1.78)	3/8	87.0	1.2
QB-117	7 (178)	-	7000	9.0 (255)	90 (6.3)	13 1/2 (343)	1.0	7.1 (3.24)	1/2	89.7	1.0

Air Angle Grinders

Grinding discs not included – see Abrasive section



QB-179 (9")
Air Angle Vertical Grinder
 Lever Type Throttle
 Air inlet: 1/2"



- 9" (230mm)
- Specially coated body for improved durability
- Over run governor fitted
- 2 stage lever lock safety trigger
- Comfortable dual handle operation
- Powerful 3.8 hp motor design



QB-197Q (7")
Air Vertical Grinder
 Lever Type Throttle
 Air inlet: 3/8"



- 7" (178mm)
- Under 80 dBA
- Dual handle to improve operator safety and comfort
- Powerful 2.2 hp motor
- Wide pneumatic spectrum – ideal for automotive or industrial applications

Part No.	Pad Diameter inch (mm)	Spindle Size inch	Free Speed RPM	Average Air Consumption CFM (l/min)	Air Pressure PSI (Bar)	Overall Length inch (mm)	Motor HP	Net Weight lbs (kg)	Air Hose inch	Sound Pressure dBA	Vibration Level m/s ²
QB-179	9 (230)	5/8-11	6000	7.0 (198)	90 (6.3)	11 (279)	3.8	13.2 (6.0)	3/4	86.0	2.1
QB-197Q	7 (178)	5/8-11	7000	6.0 (170)	90 (6.3)	13 ¹⁵ /16 (353)	2.2	6.8 (3.1)	3/8	77.0	1.5



QC-213

Heavy Duty Air Cut-Off Tool

Wheel Size: 3" – Cutting Wheel Supplied

Air inlet: 1/4"



- 0.9 hp high power motor
- Casted aluminum housing for longer lifetime
- Excellent for cutting rusted bolts, nuts, motor exhaust clamps or hangers, sheet metal, fibreglass etc
- Supplied complete with cutting disc



QC-234

Heavy Duty 4" Air Cut-Off Tool

Cutting Wheel Supplied

Air inlet: 1/4"



- 0.9 hp high power motor efficiently handles the toughest jobs
- Excellent for cutting rusted bolts, nuts, motor exhaust clamps or hangers, sheet metal, fibreglass etc
- Supplied complete with cutting disc



QC-253

3" Air Cut-Off Tool

Cutting Wheel Supplied

Air inlet: 1/4"



- 0.9 hp high power motor
- Casted aluminum housing for longer lifetime
- Excellent for cutting rusted bolts, nuts, motor exhaust clamps or hangers, sheet metal, fibreglass etc
- Supplied complete with cutting disc



QC-254

4" Air Corner Cut-Off Tool

Cutting Wheel Supplied

Air inlet: 1/4"



- 0.9 hp high power motor
- Casted aluminum housing for longer lifetime
- Excellent for cutting rusted bolts, nuts, motor exhaust clamps or hangers, sheet metal, fibreglass etc
- Supplied complete with cutting disc



QC-213-31

3" Cut-Off Disc

Part No.	Wheel Size inch (mm)	Free Speed RPM	Average Air Consumption CFM (l/min)	Air Pressure PSI (Bar)	Overall Length inch (mm)	Motor HP	Net Weight lbs (kg)	Air Hose inch	Sound Pressure dBA	Vibration Level m/s ²
QC-213	3 (75)	20000	10.0 (283)	90 (6.3)	7 ⁷ / ₈ (200)	0.9	1.9 (0.86)	3/8	80.2	10.8
QC-234	4 (100)	16000	10.0 (283)	90 (6.3)	14 (355)	0.9	3.5 (1.59)	3/8	85.0	5.0
QC-253	3 (75)	24000	4.0 (113)	90 (6.3)	8 (203)	0.6	1.7 (0.8)	3/8	91.0	1.2
QC-254	4 (100)	20000	5.0 (141)	90 (6.3)	8 ¹ / ₈ (206)	0.6	2.0 (0.9)	3/8	81.0	0.8



QG-102
Air Shear
Straight Type
Air inlet: 1/4"



- Ideal for cutting sheet aluminum up to 1.5mm, steel up to 1.2mm and stainless steel up to 1.0mm
- Heat treated shear blades
- Common applications include cutting auto panels and sheet steel such as tin, steel and aluminium



QG-202
Air Shear
Pistol Type
Air inlet: 1/4"



- Composite body and rubber handle offers non-slip grip
- Ideal for cutting sheet aluminum up to 1.5mm, steel up to 1.2mm and stainless steel up to 1.0mm
- Heat treated shear blades
- Common applications include cutting auto panels and sheet steel



QG-103
Air Nibbler
Air inlet: 1/4"



- Rear exhaust reduces noise level
- Ergonomic handle for user comfort
- Intergrated regulator for precise cutting
- Ideal for tin and aluminum up to 1.5mm



PN-150
Air Punch & Flange Tool
Air inlet: 1/4"



- 2-in-1 operation punch/flange tool
- 360° rotating head switches from punch to flange
- Powerful 5mm punch
- Ideal for panel and body work
- 1.6mm steel capacity

Part No.	Strokes Per Minute SPM	Average Air Consumption CFM (l/min)	Air Pressure PSI (Bar)	Overall Length inch (mm)	Net Weight lbs (kg)	Air Hose inch	Sound Pressure dBA	Vibration Level m/s ²	Cut Capacity mm
QG-102	2600	6.0 (170)	90 (6.3)	10 (254)	2.2 (1.0)	3/8	85.8	2.4	1.2 (steel) – 1.6 (alum)
QG-202	2600	6.5 (184)	90 (6.3)	8 1/4 (210)	2.43 (1.1)	3/8	89.1	2.9	1.2 (steel) – 1.6 (alum)
QG-103	2600	3.0 (85)	90 (6.3)	7 3/5 (193)	2.2 (1.0)	3/8	88.0	2.8	1.2 (steel) – 1.6 (alum)

Part No.	Punch Diameter mm	Average Air Consumption CFM (l/min)	Air Pressure PSI (Bar)	Overall Length inch (mm)	Net Weight lbs (kg)	Air Hose inch	Sound Pressure dBA	Vibration Level m/s ²	Cut Capacity mm
PN-150	5	40 (113)	90 (6.3)	10 (254)	2.5 (1.15)	3/8	62.0	0.1	1.6 (steel)



QD-291N

Air Saw Set – 22 pieces

Air inlet: 1/4"

- 1 x Air Saw Tool
- 6 x 24T Saw Blades
- 6 x 32T Saw Blades
- 2 x Allen Keys: 4mm, 3mm
- 1 x 1/4" 360° Swivel Adaptor
- 5 x File Set
- 1 x Mini Oiler 1/4"



- Quick change saw blade holder allows for easy blade replacement
- 5 piece file set and 12 saw blades included
- Adjustable guard/guide controls depth of cut precisely



QD-501

Air Saw – Gear Driven (3 in 1)

Air inlet: 1/4"



- Chuck connection for Air Saw / Sawzall Blade / File
- Sturdy Transmission not easily stripped due to external force
- Soft Rubber Hand Grip



QD-221

Air Saw with Hose

Air inlet: 1/4"



- Quick change saw blade holder allows for easy blade replacement
- 5 pieces file set and 2 saw blades included
- Adjustable guard/guide controls depth of cut precisely
- Excellent for cutting sheet aluminum, plastic and sheet metal up to 1.6mm
- 4 piece files available – order QD-906P



QD-321

Air Saw – Low Vibration

Air inlet: 1/4"



- Designed to reduce vibration
- Streamlined for improved operator ergonomics
- Increased stroke to raise work efficiency
- Specially processed cylinder for increased lifetime

QD-501-53

24T Saw Blade

Bi-Metal Material



QD-501-52

32T Saw Blade

Bi-Metal Material



Part No.	Strokes Length mm	Strokes Per Minute SPM	Collet Size mm	Average Air Consumption CFM (l/min)	Air Pressure PSI (Bar)	Overall Length inch (mm)	Net Weight lbs (kg)	Air Hose inch	Sound Pressure dBA	Vibration Level m/s ²
QD-291N	10	9000	5.0	4.0 (113)	90 (6.3)	9 1/4 (235)	1.32 (0.6)	3/8	80.0	2.4
QD-501	10	7000	-	4.5 (127)	90 (6.3)	11 5/8 (296)	2.60 (1.2)	3/8	78.0	4.5
QD-221	10	5000	4.0	4.0 (113)	90 (6.3)	9 3/4 (250)	1.76 (0.8)	3/8	81.9	4.1
QD-321	14.5	11000	-	4.5 (127)	90 (6.3)	9 1/4 (235)	1.7 (0.7)	3/8	83.0	2.0



RA-801

Air Screwdriver – Adjustable Clutch

Screw Capacity: M4

Air inlet: 1/4"



- 1/4" 1800 RPM adjustable clutch screwdriver
- Built-in quick change chuck
- Safety forward/reverse valve
- Handle exhaust directs air away from work area
- Common applications include PVC and wood working assembly
- Equipped with internal torque adjustment
- High speed 13.5 Nm torque capacity



RA-802

Air Screwdriver – Adjustable Clutch

Screw Capacity: M6

Air inlet: 1/4"



- Ideal for cutting sheet aluminum up to 1.5mm, steel up to 1.2mm and stainless steel up to 1.0mm
- Heat treated shear blades
- Common applications include cutting auto panels and sheet steel such as tin, steel and aluminium



RA-201

Air Impact Screwdriver

Twin Dog Type

Air inlet: 1/4"



- Pistol impact screwdriver
- Twin dog impact mechanism
- 1/4" Hex quick change bit holder
- Fast and easy operation (10000 RPM)
- Supplied with suspension bail
- Common applications include, furniture and window manufacturing/assembly



QE-231

3/8" Spot Drill & Hook

Air inlet: 1/4"



- 8mm drill bit included – 6.5 and 10mm drills available
- Adjustable chuck for easy control
- Hook easily removed or installed
- High quality piston improves torque and efficiency,
- Common applications include drilling into oddly shaped objects
- Maximum drill depth: 4.5mm steel, 3.8mm stainless

Part No.	Chuck Size inch (mm)	Torque Range ft-lbs (Nm)	Free Speed RPM	Motor HP	Average Air Consumption CFM (l/min)	Air Pressure PSI (Bar)	Overall Length inch (mm)	Net Weight lbs (kg)	Air Hose inch	Sound Pressure dBA	Vibration Level m/s ²
RA-801	1/4 (6.35)	3.8-10.4 (5-14)	1800	-	4.0 (113)	90 (6.3)	7 ³ / ₄ (195)	2.70 (1.2)	3/8	83.0	4.2
RA-802	1/4 (6.35)	3.8-13.0 (5-18)	800	-	4.0 (113)	90 (6.3)	8 ⁹ / ₃₂ (210)	2.80 (1.3)	3/8	83.0	4.2
RA-201	1/4 (6.35)	3.7-18.5 (5-25)	10000	-	9.0 (255)	90 (6.3)	9 (180)	2.65 (1.2)	3/8	93.0	5.3
QE-231	5/16 (8.0)	-	1800	0.50	6.0 (170)	90 (6.3)	9 ¹ / ₄ (235)	4.40 (2.0)	3/8	88.2	0.1



QE-331

3/8" Air Reversible Drill

With Keyless Chuck

Air inlet: 1/4"

- Convenient forward/reverse valve
- Non-slip handle
- 10mm keyless chuck
- Common applications include general maintenance



QE-431

3/8" Air Reversible Drill

With Keyless Chuck

Air inlet: 1/4"

- 10mm keyless chuck
- 2 piece planet gears
- Heavy duty aluminium body
- Common applications include general industrial drilling



QE-333

Same features as above – with Key Chuck



QE-433

Same features as above – with Key Chuck



QE-341

1/2" Air Reversible Drill

With Keyless Chuck

Air inlet: 1/4"

- Convenient forward/reverse valve
- Non-slip handle
- Handle exhaust to reduce noise
- 13mm keyless chuck
- Common applications include general maintenance



QE-342

1/2" Air Drill

With Keyless Chuck

Air inlet: 1/4"

- 13mm keyless chuck
- Non-slip grip and side handle
- Handle exhaust to reduce noise
- Ideal for general maintenance



QE-343

Same features as above – with Key Chuck



QE-344

Same features as above – with Key Chuck

Part No.	Chuck Size inch (mm)	Free Speed RPM	Motor HP	Average Air Consumption CFM (l/min)	Air Pressure PSI (Bar)	Overall Length inch (mm)	Net Weight lbs (kg)	Air Hose inch	Sound Pressure dBA	Vibration Level m/s ²
QE-331	3/8 (10)	1800	0.65	6.5 (184)	90 (6.3)	8 (203)	2.42 (1.1)	3/8	96.5	0.3
QE-431	3/8 (10)	1800	0.50	4.0 (112)	90 (6.3)	8 ²⁹ /32 (226)	2.60 (1.18)	3/8	90.0	3.0
QE-341	1/2 (13)	800	0.65	6.5 (184)	90 (6.3)	9 (230)	3.96 (1.8)	3/8	96.5	0.1
QE-342	1/2 (13)	800	0.60	6.5 (184)	90 (6.3)	8 ¹ /4 (209)	3.74 (1.7)	3/8	96.5	0.1



QE-533

3/8" Air Reversible Drill

With Key Chuck

Air inlet: 1/4"

- High speed industrial drill (2200 RPM)
- Convenient forward/reverse switch
- Handle exhaust to reduce noise and direct air away from the operator
- Ideal for industrial applications including reaming, hole sawing and general drilling requiring high torque



QE-543

1/2" Air Reversible Drill

With Key Chuck

Air inlet: 1/4"

- Low speed industrial drill (1100 RPM)
- Convenient forward/reverse switch
- Handle exhaust to reduce noise and direct air away from the operator
- Side handle supplied for complete control
- Ideal for industrial applications including reaming hole sawing and general drilling requiring high torque



QE-933

3/8" Air Reversible Straight Drill

With Keyless Chuck

Air inlet: 1/4"

- Convenient forward/reverse button and lever
- 10mm keyless chuck
- Rear exhaust
- Ideal for drilling in confined spaces



QE-633

3/8" 90° Air Reversible Angle Drill

With Keyless Chuck

Air inlet: 1/4"

- Convenient forward/reverse button and lever
- 10mm keyless chuck
- Rear exhaust
- Ideal for drilling in confined spaces



QE-98L

Double Axis Bubble Spirit Level Gradienter

- Suits M7 range of Air Drills



Part No.	Chuck Size inch (mm)	Free Speed RPM	Motor HP	Average Air Consumption CFM (l/min)	Air Pressure PSI (Bar)	Overall Length inch (mm)	Net Weight lbs (kg)	Air Hose inch	Sound Pressure dBA	Vibration Level m/s ²
QE-533	3/8 (10)	2200	0.50	4.0 (112)	90 (6.3)	9 ¹³ / ₃₂ (189)	2.70 (1.23)	3/8	90.0	2.0
QE-543	1/2 (13)	1100	0.50	4.0 (112)	90 (6.3)	10 ⁵⁵ / ₆₄ (276)	3.80 (1.73)	3/8	90.0	2.0
QE-933	3/8 (10)	2600	0.50	3.0 (85)	90 (6.3)	8 ¹⁵ / ₃₂ (215)	2.0 (0.9)	3/8	72.0	2.5
QE-633	3/8 (10)	1600	0.50	3.0 (85)	90 (6.3)	8 ¹ / ₄ (210)	2.4 (1.1)	3/8	72.0	2.5



SC-211C

Air Hammer Round Shank

SC-4 Chisel Kit is provided with this tool

Air inlet: 1/4"

- Spring retainer for simple accessory changing
- Common applications include exhaust work, bolt cutting, panel cutting and general work requiring percussive action



SC-212C

Air Hammer Round Shank

SC-222C

Air Hammer Hex Shank

SC-4 Chisel Kit is provided with these tools

Air inlet: 1/4"

- Spring retainer for simple accessory changing
- Common applications include exhaust work, bolt cutting, panel cutting and general work requiring percussive action



SC-0627C

Air Hammer Set – 7 Pieces

Air inlet: 1/4"

- 1 x Air Hammer
- 5 x Hex Chisel Kit (SC-425)
- 1 x Spring Retainer
- 1 x Blow Moulded Case

- Kit contains SC-222C – features as above



SC-33C

Round Shank

SC-34C

Hex Shank

Air Hammer attachment easily converts the above to a needle scaler

- 19 high strength needles
- Two different models suitable for Round or Hex chisels
- Convenient accessory for every tool box



SC-4

175mm Chisel Set

- Flat Chisel
- Cutting Chisel
- Tapered Punch
- Ripping Chisel
- Tail Pipe Cutter



SC-415 - Round / SC-425 - Hex

Part No.	Shank	Chuck Size inch (mm)	Stroke Length mm	Blows Per Minute BPM	Average Air Consumption CFM (l/min)	Air Pressure PSI (Bar)	Overall Length inch (mm)	Net Weight lbs (kg)	Air Hose inch	Sound Pressure dBA	Vibration Level m/s ²
SC-211C	Round	0.401 (10.2)	67	3200	4.0 (113)	90 (6.3)	67/8 (175)	3.70 (1.7)	3/8	98.0	12.3
SC-212C	Round	0.401 (10.2)	89	2200	4.0 (113)	90 (6.3)	87/8 (225)	4.40 (2.0)	3/8	94.7	13.2
SC-222C	Hex	0.393 (10)	89	2200	4.0 (113)	90 (6.3)	87/8 (225)	4.40 (2.0)	3/8	94.7	13.2



SN-2110

Air Pistol Needle Scaler

Air inlet: 1/4"

- General purpose needle scaler ideal for surface preparation work
- 19 high strength steel needles for longer life



SN-1268-46

19 Needle Set – 3 x 180mm

- For SN-1268 & SN-2110



SN-1268

Air Needle Scaler

Air inlet: 1/4"

- General purpose 2-in-1 needle scaler/chipper ideal for surface preparation work
- Adjustable external sleeve to increase needle length
- 19 high strength steel needles for longer life
- Supplied complete with chisel



SN-3121C

Air Hammer Round Shank

Air inlet: 1/2"

- 0.58 round chisel holder
- 2500 blows per minute
- Steel forged construction provides industrial level quality and durability
- Designed for easy maintenance and repair
- Supplied complete with tapered chisel



Part No.	Needle Diameter mm	Number of Needles	Stroke Length mm	Blows Per Minute BPM	Average Air Consumption CFM (l/min)	Air Pressure PSI (Bar)	Overall Length inch (mm)	Net Weight lbs (kg)	Air Hose inch	Sound Pressure dBA	Vibration Level m/s ²
SN-2110	3 x 180	19	33	3700	15 (424)	90 (6.3)	13 (330)	6.16 (2.8)	3/8	97.0	9.7
SN-1268	3 x 180	19	28	4600	15 (424)	90 (6.3)	18 1/8 (460)	6.16 (2.8)	3/8	91.0	13.7
Part No.	Shank	Chuck Size inch (mm)	Stroke Length mm	Blows Per Minute BPM	Average Air Consumption CFM (l/min)	Air Pressure PSI (Bar)	Overall Length inch (mm)	Net Weight lbs (kg)	Air Hose inch	Sound Pressure dBA	Vibration Level m/s ²
SN-3121C	Round	0.58 (14.8)	75	2500	10 (283)	90 (6.3)	15 1/2 (395)	15.4 (7.0)	1/2	115.3	8.0



PA-201

1/4" Air Hydraulic Riveter

Air inlet: 1/4"

- Mirror polished cylinder and piston provides less friction and allows the rivet to release quickly
- Performs well at any angle and gets into hard-to-reach areas
- Powerful, durable, high speed production tool
- Supplied complete with 2.4, 3.2, 4.0, 4.8, 6.0 and 6.4mm nosepieces



PA-301

3/16" Air Hydraulic Riveter

Air inlet: 1/4"

- Quick release air valve permits cylinder to return quickly for high speed assembly operations and prevents overloading for durability
- Quick, quiet and comfortable operation reduces operator fatigue
- Supplied complete with 2.4, 3.2, 4.0 and 4.8mm nosepieces



PB-1310

Air Riveter Nut Tool

Air inlet: 1/4"

- Automatic mechanism for fast operation
- Quick release design to change mandrel
- Two trigger design allowing quick forward/reverse operation
- Excellent for mass production line and general manufacturing



Part No.	Traction Power lb-ft (kg-ft)	Free Speed RPM	Stroke Length mm	Capacity mm	Average Air Consumption l/cycle	Air Pressure PSI (Bar)	Net Weight lbs (kg)	Air Hose inch	Sound Pressure dBA	Vibration Level m/s ²
PA-201	3534 (1603)	-	14	2.4-6.4	2.32	90 (6.3)	3.9 (1.80)	3/8	79.7	0.5
PA-301	2303 (1045)	-	16	2.4-4.8	1.48	90 (6.3)	3.3 (1.50)	3/8	79.7	0.3
PB-1310	-	400	-	M8 - M10	7.80	90 (6.3)	2.80 (1.30)	3/8	86.0	1.6

Air Hydraulic Nut Setters & Riveter Adaptors



PB-2402 Air Hydraulic Nut Setter

Air inlet: 1/4"

- Excellent for mass production line and general manufacturing
- Mandrels supplied with tools M4 to M10
- Superior quality
- Easy to maintain



PB-2601 Air Hydraulic Nut Setter

Air inlet: 1/4"

- Automatic mechanism to quickly push and pull back rivets
- Six spindle sizes: 3, 4, 5, 8, 10 and 12mm
- Thickness of the pull nut can be adjusted quickly



	Traction Power lb-ft (kg-ft)	Free Speed RPM	Stroke Length mm	Capacity mm	Average Air Consumption CFM	Air Pressure PSI (Bar)	Net Weight lbs (kg)	Air Hose inch	Sound Pressure dBA	Vibration Level m/s ²
PB-2402	3638 (1650)	-	9	M4-M10	1.50	90 (6.3)	3.41 (1.55)	3/8	82.0	0.8
PB-2601	4300 (1950)	594	0-7.0	M3-M12	7.5	90 (6.3)	5.4 (2.46)	3/8	80.0	1.2

PA-9064 1/4" (6.35mm) Riveter Adaptor



PB-9006 M6 Riveter Nut Adaptor



PA-9010 M10 Riveter Nut Adaptor



Technical Data

PA-9064

Dimensions	59mm x 173mm (2 ¹¹ / ₃₂ " x 6 ³ / ₄ ")
Net Weight	330g / 0.73 lbs
Gross Weight	500g / 1.10 lbs
Nosepiece	3.2mm (1/8"), 4.0mm (5/32")
Nosepiece	4.8mm (3/16"), 6.4mm (1/4")
Hex Shank	1/4" (6.35mm)
Cordless Drill	14.4V, 18V
Cordless Drive	14.4V, 18V
Reversible Electric	1/2" Drill
Reversible Pneumatic	1/2" Drill
Minimum Torque Strength	50 Nm = 37 ft/lbs
Maximum RPM	1,000 RPM
1. Hex Shank	1/4" (6.35mm)
2. Housing	PA+GF
3. Nosepiece	3.2, 4.0, 4.8, 6.4mm
4. Sight Window	Blind Rivet Loading
5. Wrench	1 piece
6. Handle	1 piece

PB-9006

Dimensions	59mm x 172mm (2 ¹¹ / ₃₂ " x 6 ²⁵ / ₃₂ ")
Net Weight	280g / 0.62 lbs
Cordless Drill	M3 M4 M5 M6
Hex Shank	1/4" (6.35mm)
Cordless Drill	12V 14.4V
Cordless Drive	12V 14.4V
Reversible Electric	Drill (Advice 500W)
Reversible Pneumatic	Drill (Advice 3/8")
Minimum Torque Strength	15 Nm / 11 ft/lbs
Maximum RPM	1000 RPM

PA-9010

Dimensions	59mm x 180mm (2 ¹¹ / ₃₂ " x 7 ³ / ₃₂ ")
Net Weight	350g / 0.77 lbs
Nosepiece	M6 M8 M10
Hex Shank	1/4" (6.35mm)
Cordless Drill	14.4V
Cordless Drive	18V
Reversible Electric	Drill (Advice 500W)
Reversible Pneumatic	Drill (Advice 1/2")
Minimum Torque Strength	100 Nm / 73.7 ft-lbs
Maximum RPM	800 RPM



QB-48 (4 1/2") (QB-48111)
 Air Random Orbital Sander
 Non-Vacuum (Jitterbug)
 Air inlet: 1/4"



- Random orbit, non vacuum
- Elastic mechanism for durability and longer lifespan
- 100 x 110mm pad
- Lower body with low profile design



QB-45 (6") (QB-45602)
 Air Random Orbital Sander
 Central Vacuum
 Air inlet: 1/4"



- Convenient air / speed regulator
- Rubber palm grip allows for a one-hand operation
- 3/16" (5mm) orbit for fine finishes
- Hook (Velcro) pad with 6 holes



QB-46 (6") (QB-46602)
 Air Random Orbital Sander
 Non-Vacuum
 Air inlet: 1/4"



- Convenient air / speed regulator
- Rubber palm grip allows for a one-hand operation
- 3/16" (5mm) orbit for fine finishes
- Hook (Velcro) pad
- Excellent for refinishing or smoothing the surface of metal, wood, leather etc



QB-47 (6") (QB-47602)
 Air Random Orbital Sander
 Self-Generating Vacuum
 Air inlet: 1/4"



- Excellent for mass production line and general manufacturing
- Mandrels supplied with tools M4 to M10
- Superior quality
- Easy to maintain

Part No.	Pad Diameter inch (mm)	Free Speed RPM	Average Air Consumption CFM (l/min)	Air Pressure PSI (Bar)	Overall Length inch (mm)	Motor HP	Net Weight lbs (kg)	Air Hose inch	Sound Pressure dBA	Vibration Level m/s ²	Orbit mm
QB-48	4x4 ³ / ₈ (100x110)	11000	7.0 (198)	90 (6.3)	5 ¹ / ₅ (130)	0.28	2.0 (0.91)	3/8	83.0	1.5	2.5
QB-45	6 (152)	10000	3.85 (109)	90 (6.3)	7 ¹ / ₂ (193)	0.24	1.85 (0.84)	3/8	81.6	2.2	5.0
QB-46	6 (152)	10000	3.85 (109)	90 (6.3)	6 ¹ / ₂ (166)	0.24	1.74 (0.79)	3/8	80.1	2.2	5.0
QB-47	6 (152)	10000	3.85 (109)	90 (6.3)	7 ¹ / ₂ (193)	0.24	2.49 (1.13)	3/8	84.7	2.2	5.0



QB-41 (6") (QB-41902)
Air Random Orbital Sander
Central Vacuum
Air inlet: 1/4"



- Rubber palm grip
- Lightweight cast aluminium housing for durability
- Leak-proof rubber shroud provides maximum vacuum
- Excellent for refinishing or smoothing most surfaces
- 3/16" (5mm) orbit for fine finishes



QB-42 (5") (QB-42602)
Air Random Orbital Sander
Non- Vacuum
Air inlet: 1/4"



- Rubber palm grip
- Lightweight cast aluminium housing for durability
- Excellent for refinishing or smoothing the surface of metal, wood, leather etc
- 3/16" (5mm) orbit for fine finishes



QB-43 (6") (QB-43902)
Air Random Orbital Sander
Self-Generating Vacuum
Air inlet: 1/4"



- Rubber palm grip
- Lightweight cast aluminium housing for durability
- Leak-proof rubber shroud provides maximum vacuum
- Excellent for refinishing or smoothing most surfaces
- Air hose and vacuum hose are both included
- 3/16" (5mm) orbit for fine finishes



QB-57 (6") (QB-57602)
Air Random Orbital Sander
Central Vacuum
Air inlet: 1/4"



- Two-handed aluminium body completely covered with composite materials to provide operator comfort during prolonged use
- Air valve to adjust and control speed
- 3/16" (5mm) orbit for fine finishes
- Excellent for refinishing or smoothing the surface of metal, wood, leather etc

Part No.	Pad Diameter inch (mm)	Free Speed RPM	Average Air Consumption CFM (l/min)	Air Pressure PSI (Bar)	Overall Length inch (mm)	Motor HP	Net Weight lbs (kg)	Air Hose inch	Sound Pressure dBA	Vibration Level m/s ²	Orbit mm
QB-41	6 (152)	10000	3.85 (109)	90 (6.3)	8 (206)	0.24	2.0 (0.91)	3/8	81.5	1.2	5.0
QB-42	6 (152)	10000	3.85 (109)	90 (6.3)	6 1/2 (166)	0.24	1.85 (0.84)	3/8	74.4	1.4	5.0
QB-43	6 (152)	10000	3.85 (109)	90 (6.3)	8 3/4 (221)	0.24	3.30 (1.54)	3/8	83.0	1.4	5.0
QB-57	6 (152)	10000	3.10 (88)	90 (6.3)	9 7/16 (240)	0.40	2.60 (1.20)	3/8	80.0	1.3	5.0



QP-113 (3") Air Pistol Sander

Air inlet: 1/4"

- Pistol Sander (2.5mm) orbit
- Ergonomic cushion-grip handle
- Low noise – 74 dBA
- Speed can be adjusted
- 360° air inlet swivel
- Lightweight, compact and portable
- Ideal for spot repair and delicate finishing



QP-123 (3") Air Pistol Polisher

Air inlet: 1/4"

- Pistol Polisher
- 2100 RPM
- Low noise – 74 dBA
- Ergonomic cushion-grip handle
- Speed can be adjusted
- 360° air inlet swivel
- Lightweight, compact and portable
- Ideal for general automotive polishing



Pads & Sponges Air Pistol Sander / Polisher – Accessories

QB-9403
Rough 3" For QP-113



QB-9413
Medium 3" For QP-123

QB-9323
3" Pad



QP-213N Air Mini Sander

Air inlet: 1/4"

- 1 x Air Mini Sander
- 1 x 2" Pad (5/16-24")
- 1 x 3" Pad (5/16-24")
- 10 x 2" Sandpaper #180
- 10 x 2" Sandpaper #220
- 10 x 2" Sandpaper #320
- 10 x 3" Sandpaper #180
- 10 x 3" Sandpaper #220
- 10 x 3" Sandpaper #320
- 1 x 1/4" Plug
- 1 x Oil Box
- 2 x Spanner Wrench



QP-223N Air Mini Polisher

Air inlet: 1/4"

- 1 x Air Mini Polisher
- 1 x 3" Pad
- 1 x 3" Sponge (Medium)
- 1 x 3" Sponge (Rough)
- 1 x 3" Wool Bonnet
- 1 x 1/4" Plug
- 1 x Spanner Wrench



Part No.	Pad Diameter inch (mm)	Spindle	Free Speed RPM	Average Air Consumption CFM (l/min)	Air Pressure PSI (Bar)	Overall Length inch (mm)	Motor HP	Net Weight lbs (kg)	Air Hose inch	Sound Pressure dBA	Vibration Level m/s ²	Orbit mm
QP-113	3 (76)	5/16-24	15000	3.5 (99)	90 (6.3)	5 (127)	0.40	1.58 (0.72)	3/8	74.0	0.3	2.5
QP-123	3 (76)	7/16-20	2100	3.5 (99)	90 (6.3)	5 5/16 (135)	0.40	1.69 (0.77)	3/8	74.0	0.3	-
QP-213N	3 (76)	5/16-24	18000	2.1 (59)	90 (6.3)	4 5/8 (117)	0.30	1.10 (0.50)	3/8	76.0	1.2	-
QP-223N	3 (76)	5/16-24	5500	2.2 (62)	90 (6.3)	5 1/8 (130)	0.30	1.30 (0.50)	3/8	74.0	0.9	-



QB-311 Air Belt Sander – 10mm

Air inlet: 1/4"



- 10mm belt – can be easily changed
- Belt automatically adjusts to correct position
- Belt shroud protects hands
- Rubber handle offers non-slip grip and insulates hands from cold housing
- Common applications include sanding and smoothing of welds, paint, rust and deburring removal



QB-312 Air Belt Sander – 20mm

Air inlet: 1/4"



- 20mm belt – can be easily changed
- Belt automatically adjusts to correct position
- Long belt shroud protects hands
- Rubber handle offers non-slip grip and insulates hands from cold housing
- Common applications include sanding and smoothing of welds, paint, rust and deburring removal



QB-324 Air Belt Sander – 12.7mm Extended

Air inlet: 1/4"



- 12.7mm extended belt – can be easily changed
- Adjustable belt speed control regulator
- Belt automatically adjusts to correct position
- Rubber handle offers non-slip grip and insulates hands from cold housing
- Common applications include sanding and smoothing of welds, paint, rust and deburring removal in difficult-to-access locations



QB-325N (KIT) Air Belt Sander

Air inlet: 1/4"

Belt sizes (mm):
20-520
20-330
10-330
6-360



- Adjustable belt speed regulator
- Non-woven abrasive belt available
- Ergonomic design for comfortable operation

For replacement sanding belts – see page 464

Part No.	Belt Size inch (mm)	Free Speed RPM	Average Air Consumption CFM (l/min)	Air Pressure PSI (Bar)	Overall Length inch (mm)	Net Weight lbs (kg)	Air Hose inch	Sound Pressure dBA	Vibration Level m/s ²
QB-311	3/8 x 13 (10 x 330)	16000	8.0 (226)	90 (6.3)	11 1/2 (290)	1.76 (0.80)	3/8	89.7	0.5
QB-312	3/4 x 20 1/2 (20 x 520)	16000	9.0 (254)	90 (6.3)	14 (360)	2.65 (1.20)	3/8	91.8	0.4
QB-324	1/2 x 24 (12.7 x 610)	16000	4.0 (113)	90 (6.3)	18 (455)	2.40 (1.10)	3/8	88.0	1.1
QB-325N	1/2 x 24 (12.7 x 610)	16000	4.0 (113)	90 (6.3)	12 5/8 (320)	2.10 (0.95)	3/8	90.0	1.0

Air Auto Multiple Tool Kit



NE-0405K 5-in-1 Multiple Tool Kit

Air inlet: 1/4"

Air hose: 3/8"

Air pressure: 90 PSI / 6.3 Bar

ONE FOR ALL
ONE STOP SOLUTION



Ratchet NE-9004



Die Grinder QA-9120



Angle Die Grinder QA-9620



Drill QE-2132



Angle Grinder QA-9903



Part No.	Pad Diameter inch (mm)	Spindle Size inch	Square Drive inch	Collet Size	Torque Range ft-lb(Nm)	Max. Torque ft-lb(Nm)	Motor HP	Free Speed RPM	Average Air Cons. CFM (l/min)	Overall Length inch (mm)	Net Weight lbs (kg)	Sound Pressure dBA	Vibration Level m/s ²
NE-9004	-	-	1/2	-	10-45 (13.5-61)	60 (81)	-	200	5.0 (141)	13 ¹³ / ₃₂ (340)	3.30 (1.48)	85.0	5.2
QA-9120	-	-	-	6mm & 3mm	-	-	0.5	20000	5.0 (141)	7 ¹⁵ / ₁₆ (135)	1.60 (0.73)	82.0	3.5
QA-9620	-	-	-	6mm & 3mm	-	-	0.5	14000	5.0 (141)	7 ¹⁵ / ₁₆ (135)	1.98 (0.90)	82.0	3.5
QA-9903	3 (76)	3/8-24	-	-	-	-	0.5	14000	5.0 (141)	8 ⁹ / ₁₆ (211)	4.60 (2.10)	82.0	3.5
QE-2132	-	-	-	3/8" (10mm)	-	-	-	2500	5.0 (141)	9 ³ / ₄ (248)	2.40 (1.10)	82.0	1.5



QB-0808

Air Surface Cleaning Tool Kit – 10 pieces

Air inlet: 1/4"

- 1 x Air Surface-Cleaning Tool (QB-802)
- 1 x Eraser Wheel
- 1 x Stripping Wheel
- 1 x Wire Wheel (coarse)
- 1 x Wire Wheel
- 1 x Allen Key 6mm
- 1 x Spanner Wrench
- 1 x 1/4" Plug
- 1 x Adaptor Male UNF 5/16"-24"
- 1 x Female M6 1.0



	Free Speed RPM	Air Pressure inch (mm)	Average Air Consumption CFM (l/min)	Motor HP	Overall Length inch (mm)	Net Weight lbs (kg)	Air Hose inch	Sound Pressure dBA	Vibration Level m/s ²
QB-802	3600	90 (6.3)	10.6 (300)	0.7	77/8 (200)	2.6 (1.2)	3/8	86	0.3



PC-1012 (PC-2010)

Air Tapping Tool

Air inlet: 1/4"

ADJUSTABLE TORQUE

- Built in air regulator
- Handle exhaust
- Low speed and side handle for complete control
- Ideal for thread tapping or cleaning
- Two trigger design for quick forward/reverse operation

Collet	mm	inches
T4	3	1/8
T5	4	5/62
T5.5	5	3/16
T6	6	1/4
T6.2	7	5/16
T7	8	3/8
T8.5	10	7/16



Part No.	CAPACITY		Free Speed RPM	Stroke Length inch (mm)	Average Air Consumption CFM (l/min)	Air Pressure PSI (Bar)	Net Weight lbs (kg)	Air Hose inch	Sound Pressure dBA	Vibration Level m/s ²
	Steel	Copper								
PC-2010	M3-M8	M3-M12	150	12 (305)	6.5 (184)	90 (6.3)	5.4 (2.45)	3/8	82	1.5



SG-400 Air Grease Gun

Air inlet: 1/4"



- Heavy duty cast aluminium for maximum durability
- Output volume 288 LPM
- Working pressure 40-96 PSI



QK-111 Air Windshield Remover

Air inlet: 1/4"



- Rear exhaust and extended muffler tube reduces noise and air pollution
- Lower vibration minimises user fatigue for longer operation
- Lower components wear rate prolongs durability
- Blade can be mounted in 12 different ways for user convenience



SB-201 Digital Tyre Inflator

Air inlet: 1/4"



- 360° digital display in Bar
- Supplied with euro probe
- Tyre deflation button
- 300mm flexible hose

SB-501 Tyre Inflator

Air inlet: 1/4"



- Heavy duty tyre inflator designed for forecourt use
- Pressure range 0-160 PSI (11 Bar)
- Twin hold-on valve
- Spring reinforced hose for durability

Part No.	Air Inlet inch	Working Pressure kgf/cm ²	Proof Pressure kgf/cm ²	Capacity CC	Net Weight lbs (kg)	Air Hose inch	Sound Pressure dBA	Vibration Level m/s ²
SG-400	1/4	2.8-8.4	10.5	400	3.2 (1.46)	3/8	80.2	0.7
	Oscillation per min	Average Air Consumption CFM (l/min)		Overall Length inch (mm)	Net Weight lbs (kg)	Air Hose inch	Sound Pressure dBA	Vibration Level m/s ²
QK-111	20000	6.0 (170)		75/64 (180)	2.43 (1.1)	10	75.0	3.9
	Maximum Pressure PSI (Bar)	Air Consumption at 100 PSI CFM	Air Inlet inch	Air Pressure PSI (Bar)	Net Weight lbs (kg)	Air Hose inch	Nozzle Length cm	Nozzle
SB-201	160 (11.0)	1.41	1/4	90 (6.3)	0.70 (0.32)	3/8	30	Tyre Valve Clip
SB-501	160 (11.0)	1.41	1/4	90 (6.3)	2.92 (1.33)	3/8	30	Dual Valve Push-on



SM-111R Air Dent Puller

Air inlet: 1/4"



- Large area and slight depression of the sheet metal can be quickly repaired
- Three sizes of suction cups can be used in different areas of depression
- Simple structure and long product life

Part No.	Pad Diameter inch/mm	Exhaust System	Max Pulling Force kg	Air Pressure PSI (Bar)
SM-111R	3,4,5,6 (78,115, 125, 155)	REAR	90-100	90 (6.3)
	Avg. Air Consumption CFM (l/min)	Net Weight lbs (kg)	Slide Hammer Weight lbs (kg)	Overall Length inch (mm)
	8.5 (240)	6.0 (2.75)	3.5 (1.6)	44 ¹ / ₈ (1120)



SQ-0217 Air Powered Brake Caliper Wind Back Tool Set – 17 pieces

- 1 x Air Powered Brake Caliper Wind Back Tool
- 16 x Discs



SX-2101 Air Twister Gun



SX-3301 Air Solvent/Cleaner Spray Gun



SX-4101 Soda Blaster



Part No.	Cup Capacity Litre	Free Speed RPM	Sound Pressure dBA	Air Pressure PSI (Bar)	Avg. Air Consumption CFM (l/min)	Net Weight lbs (kg)	Air Hose inch	Overall Length inch (mm)
SX-2101	1.0	5500	85.0	90 (6.3)	2.0 (56.6)	1.71 (0.78)	3/8	87/32 x 49/16 (210 x 110)
SX-3301	1.0	-	-	90 (6.3)	10.0 (300)	1.52 (0.69)	1/4	11 ¹³ / ₁₆ (300)
SX-4101	0.6	-	82.0	90 (6.3)	8.0 (226.5)	0.8 (0.36)	3/8	7 ³ / ₄ (197)

MA42015

1/2" Drive Stubby Impact Socket Set – 15 pieces



Contents

10mm, 11mm, 12mm, 13mm, 14mm, 15mm, 16mm, 17mm, 18mm, 19mm, 20mm, 21mm, 22mm, 23mm, 24mm

MB44008M

1/2" Drive SAE Impact Hex Drive Set – 8 pieces



Contents

H6, H7, H8, H10, H12, H14, H17, H19

ST-10C521

Mobile Working Chair



ST-10C522S

Mobile Working Chair c/w Storage



- Colour: red/black anti scratch paint
- Seat cushion materials: high graded artificial PVC leather with sponge
- Product sizes: 350mm long, 260mm wide, 240mm high excluding wheels, drawer height: 70mm
- Product feature: daily required tools storage; squatting fatigue reduced; easy movement

MB45010M

1/2" Drive Deep Impact Socket Set – 10 pieces



Contents

10mm, 12mm, 13mm, 14mm, 15mm, 17mm, 19mm, 21mm, 24mm, 27mm

MB65008M

3/4" Drive Deep Impact Socket Set – 8 pieces



Contents

26mm, 27mm, 29mm, 30mm, 32mm, 33mm, 35mm, 36mm

MB66006M

3/4" Drive SAE Impact Hex Driver Set 100mm Length – 6 pieces



Contents

H12, H14, H17, H19, H22, H24

MA4030

1/2" Drive Deep Impact Socket Set – 3 pieces



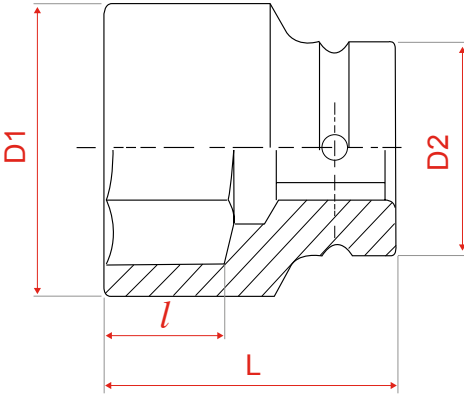
Contents

17mm, 19mm, 21mm

MA411M

1/2" Impact Standard Socket

- 1/2" drive – standard length
- 6 points
- Metric size

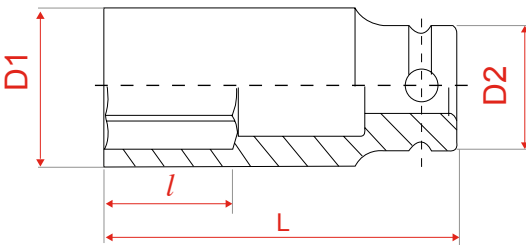


Part No.	Diameter mm	D1	D2	l	L	Weight g
MA411M08	8	14	25	7	38	67
MA411M09	9	15	25	7	38	67
MA411M10	10	17	25	8	38	70
MA411M11	11	18	25	8	38	71
MA411M12	12	19	25	9	38	72
MA411M13	13	20	25	10	38	72
MA411M14	14	22	25	10	38	77
MA411M15	15	23	30	11	38	112
MA411M16	16	24	30	11	38	112
MA411M17	17	26	30	12	38	115
MA411M18	18	27	30	13	38	115
MA411M19	19	28	30	13	38	120
MA411M21	21	30	30	14	40	125
MA411M22	22	32	30	14	40	143
MA411M23	23	33	30	15	40	143
MA411M24	24	34	30	15	42	152
MA411M26	26	37	30	15	42	173
MA411M27	27	38	30	16	44	176
MA411M30	30	42	30.5	17	44	201
MA411M31	31	44	30	20.5	46	244
MA411M32	32	46	30	19	44	205

MA431M

1/2" Impact Deep Socket

- 1/2" drive – deep version
- 6 points
- Metric size

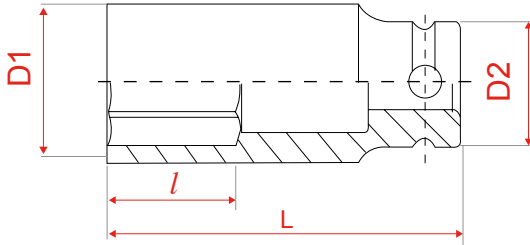


Part No.	Diameter mm	D1	D2	l	L	Weight g
MA431M08	8	14	25	12	78	116
MA431M09	9	15	25	12	78	125
MA431M10	10	17	25	12	80	136
MA431M11	11	18	25	13	80	144
MA431M12	12	19	25	14	80	157
MA431M13	13	20	25	14	80	157
MA431M14	14	22	25	14	80	172
MA431M15	15	23	30	16	80	223
MA431M16	16	24	30	16	80	230
MA431M17	17	26	30	16	80	240
MA431M18	18	27	30	17	80	255
MA431M19	19	28	30	18	80	236
MA431M21	21	30	30	20	80	240
MA431M22	22	32	30	22	80	296
MA431M23	23	33	30	24	80	300
MA431M24	24	34	30	24	80	308
MA431M26	26	37	30	27	80	344
MA431M27	27	38	30	27	80	356
MA431M28	28	41	30	27	80	424
MA431M29	29	41	30	27	80	404
MA431M30	30	42	30.5	30	80	416
MA431M32	32	46	30	32	80	510

MA631M

3/4" Impact Deep Socket

- 3/4" drive – standard length
- 6 points
- Metric size

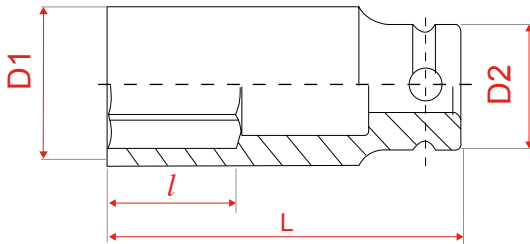


Part No.	Diameter mm	D1	D2	l	L	Weight g
MA631M19	19	32	44	20	90	558
MA631M21	21	35	44	21	90	592
MA631M22	22	36	44	21	90	607
MA631M23	23	37	44	23	90	607
MA631M24	24	38	44	23	90	626
MA631M25	25	40	44	25	90	661
MA631M26	26	40	44	25	90	623
MA631M27	27	42	44	27	90	623
MA631M28	28	44	44	27	90	670
MA631M29	29	45	44	27	90	670
MA631M30	30	46	44	27	90	691
MA631M32	32	48	44	30	90	728
MA631M33	33	50	44	30	90	790
MA631M34	34	51	44	30	90	794
MA631M35	35	52	44	32	90	803
MA631M36	36	53	44	32	90	809
MA631M38	38	56	44	34	90	882
MA631M40	40	58	44	34	90	928
MA631M41	41	59	44	34	90	938
MA631M42	42	61	44	36	95	1074
MA631M43	43	62	44	38	95	1103
MA631M44	44	64	44	38	95	1180
MA631M46	46	66	44	38	95	1210
MA631M48	48	68	54	40	95	1391
MA631M50	50	71	54	40	95	1479

MA831M

1" Impact Deep Socket

- 1" drive – deep version
- 6 points
- Metric size



Part No.	Diameter mm	D1	D2	l	L	Weight g
MA831M24	24	41	54	21	90	850
MA831M27	27	44	54	26	90	879
MA831M28	28	45	54	26	90	892
MA831M30	30	48	54	30	90	916
MA831M32	32	51	54	30	90	979
MA831M33	33	52	54	30	92	1016
MA831M34	34	53	54	30	92	1029
MA831M35	35	54	54	30	92	1016
MA831M36	36	56	54	32	92	1033
MA831M38	38	58	54	36	92	1025
MA831M40	40	60	54	36	92	1075
MA831M41	41	61	54	38	92	1083
MA831M42	42	64	54	38	92	1100
MA831M46	46	68	54	42	95	1137
MA831M50	50	73	54	42	95	1518
MA831M52	52	75	54	45	100	1637
MA831M54	54	78	54	45	100	1750
MA831M55	55	79	54	47	100	1862
MA831M58	58	83	54	47	100	1925
MA831M60	60	86	54	47	100	2050



Drive Male Adaptor



ME486

Specification: 1/2" F x 3/4" M
D: 30mm, L: 48mm, W: 161g

ME684

Specification: 3/4" F x 1/2" M
D: 44mm, L: 60mm, W: 343g

ME688

Specification: 3/4" F x 1" M
D: 46mm, L: 68mm, W: 437g

Socket Stickers Pack



8704
1/2" Drive



8706
3/4" Drive

ME-421-05 1/2" Drive Extension Bar



Length: 5" (125mm)
Weight: 228g

ME-621-06L 3/4" Drive Extension Bar

Length: 6" (150mm)
Weight: 813g

QM-1125

Pneumatic CV Joint Boots Fitting Tool



Part No.	Capacity inch (mm)	Max Air Pressure PSI (bar)	Air Pressure PSI (bar)	Overall Length inch (mm)	Net Weight lbs (kg)	Air Hose inch
QM-1125	1-4 ³ / ₈ (25-110)	125 (8.6)	90 (6.3)	17 ³ / ₈ (442)	7.15 (3.25)	3/8

Reversible Torque Wrench

- Reversible torque wrench for bi-directional tightening
- Robust 72 teeth ratchets with 5° gear action
- Fixed head version allows for use in narrow spaces
- Easily readable dual scale N-m and ft-lb below the window
- Additional micrometer scale for setting interim value
- Ergonomically shaped and convenient plastic handle grip
- Locking button enables reliable locking of the torque setting
- Tolerance of torque +/- 3%



Part No.	Drive inch	Torque Range (Nm)	Torque Range ft/lbs	Indicator	Torque Adjusting	Depth mm	Height mm	Length mm	Weight kg
TD-202025	1/4	2-25	1.5-1.8	Mag Glass	Back Turning	40.5	40	296	0.41
TD-305050	3/8	5-50	3.5-37	Mag Glass	Back Turning	40.5	40	333	0.47
TD-410100	1/2	10-100	8-75	Mag Glass	Back Turning	40.5	40	446	1.1
TD-420200	1/2	20-200	10-150	Mag Glass	Back Turning	40.5	40	513	1.28
TD-610060	3/4	100-600	75-440	Mag Glass	Back Turning	40.5	40	1040	4.65

AD-307 Wall Type Display Stand

- 1 x Brand Plate
- 2 x Angled Steel Frame
- 1 x Bottom Shelf
- 4 x Steel Plate with Holes

Width mm	Depth mm	Height mm
900	500	2230

AD-3501 Tool Fitting Bracket

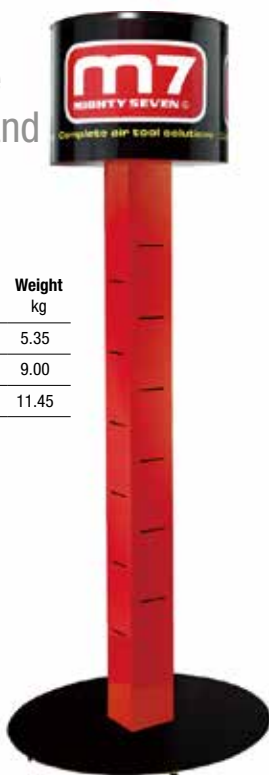


AD-305 Tower Type Display Stand

- 1 x Lamp Case Set
- 2 x Display Pillars
- 1 x Base Plate

	Length mm	Width mm	Height mm	Weight kg
Lamp Case Set	530	510	101	5.35
Display Pillars	930	330	180	9.00
Base Plate	810	820	70	11.45

AD-3601 Tool Fitting Bracket



Spares Parts Boxes

SF-306



SF-604



SF-605



	Width mm	Depth mm	Height mm
SF-306	303	106	253
SF-604	603	167	203
SF-605	603	123	153



AD-201 1/2" Drive Socket Shelf (Sockets not included)

Width mm	Depth mm	Height mm
410	340	270



AD-306 Counter Display Stand

- 1 x Transparent Holder
- 2 x Support Frames
- 1 x Bottom Shelf
- 3 x Display Couplings

Width mm	Depth mm	Height mm
300	140	340



Other **SWP** Products

1 CONSUMABLES
Super 6 and Superon welding and brazing products for joining large fabrications and DIY use.

2 WELDING MACHINES
As well as the impressive range of Stealth machines, SWP also offer Redline Automotive and Proline Professional Mig machines.

3 FUME EXTRACTION
for workplace protection against welding fumes within the Stealth branded range of quality products supplied by SWP.

4 WELDER GENERATORS
Petrol and diesel, portable and static – all with a two-year warranty. Designed and manufactured by Genset in Italy.

5 MIG WELDING
Offers a comprehensive range of Compatible Torches, Consumables and Euro Conversion Kits.

6 TIG WELDING
A wide range of Compatible Torches, Consumables, Cables, Handles, Connectors, Adaptors and Fittings.

7 PLASMA CUTTING
Offering Compatible Torches, Consumables, Central Connectors, Circle Cutting Kits and Attachments.

8 ARC WELDING ACCESSORIES
Electrode Holders, Clamps, Connectors and other accessories – plus Ovens and Quivers.

9 ABRASIVES
Supplied by 3M and WinnerFlex, combining good quality with great value and oSa® approval.

10 GAS WELDING & CUTTING
For all you need from Regulators, Nozzles, Hoses and Fittings to Cutting Equipment.

11 SAFETY & PPE
Welding Helmets and PAPR plus a comprehensive range of quality PPE, Clothing and Workplace Protection.

12 SUMNER TOOLS
For Jacks, Heads, Tools and Clamps to cover most applications from the workshop to oil fields.

13 STRONGHAND TOOLS
Including Tables, Pliers, Clamps, Magnetic Fit-Up Tools plus Markal Industrial Markers and Tempil Temperature Indicators.

15 AIR LINE ACCESSORIES
All you need to connect to your air equipment including Couplings, Blow Guns and Hoses.

16 CORDLESS TOOLS
This range is particularly suited to the auto workshop. These heavy duty tools include impact drivers, wrenches and grinders etc, plus a range of cordless kits..